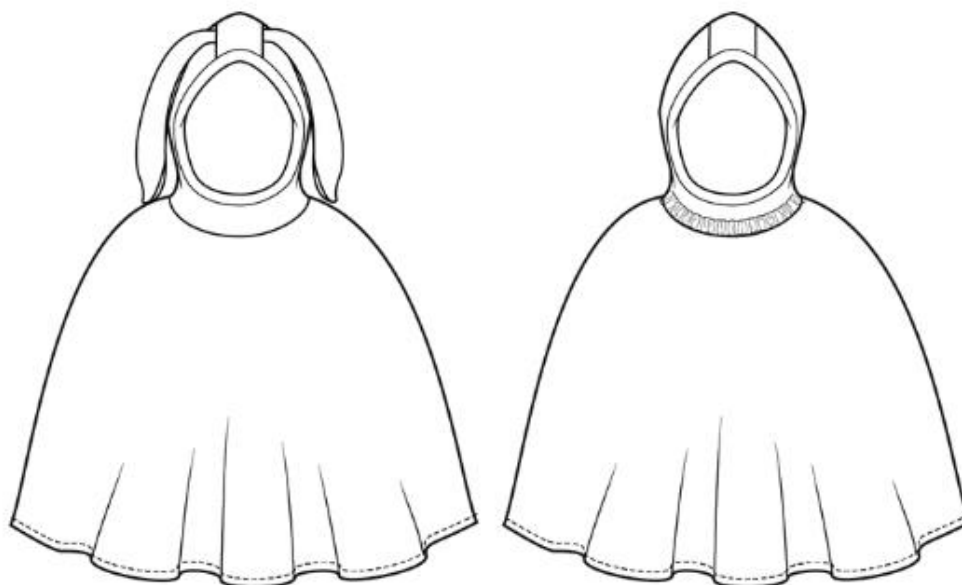


Snuggle Bunny Poncho



BY GOOBER PEA DESIGNS



*Snuggle Bunny Poncho
FREE version, with banded hood
and optional elastic casing at neck*



SIZES: 18M
TO 14 YOUTH



SNUGGLE BUNNY PONCHO—FREE VERSION

TABLE OF CONTENTS

Title Page.....	Page 1
Table of Contents/Description.....	Page 2
Supplies/Glossary.....	Page 3
Choosing Your Size.....	Page 4
Finished Measurements.....	Page 5
Fabric Requirements.....	Page 6
Choosing Your Fabric.....	Page 7
Printing the Pattern.....	Page 8
Pages to Print.....	Page 9
Print Saver Cutting Measurements.....	Page 9
Assembling the Pattern.....	Page 10-14
Size Blending.....	Page 15
Pattern Piece Checklist.....	Page 16
Cutting the Cape.....	Page 17
Construction.....	Page 18-29
Quick Construction Summary.....	Page 30-31
Optional Add-Ons.....	Page 32
Inspiration.....	Page 33-35

The Snuggle Bunny Poncho is a pull over style poncho, designed to be used in the car seat (over straps) in the smaller sizes. *****IMPORTANT - do not use unsupervised (such as in a car seat) for any child that does not have adequate motor control to easily remove the hood if it moves onto their face. Also, do not use when car is fully warmed, due to risk of overheating. It is meant to be used at very low temperatures for short trips only, when the car is not fully warmed*****

The unique hood, with a band around the face hole, allows a gape-free fit (keeping cold air out) while still being able to easily pull the neck hole over the head.

The poncho has unlined, lined, and reversible options for both knit and woven fabrics; as well as an optional elastic casing at the neck (for lined hoods only), and decorative bunny ears in multiple sizes.

Copyright Adrienne Currie, 2018

please do not sell/distribute/share this pattern, purchase is for one copy only

Have a question? Need help with a step? Please feel free to contact us!

gooberpeadesigns@gmail.com / [Facebook Page](#) / [Facebook Group](#) / [Instagram](#)

Supplies

- Fabric—see chart on [page 6](#) for exact requirements, after selecting your size
- Sewing machine
- OPTIONAL—serger
- OPTIONAL—4-6 yards of double fold bias tape / other trim (see page 6)
- OPTIONAL—1 yard of 1/2" wide elastic (for lined hood only)
- Thread to match chosen fabrics
- Scissors, pins, seam ripper, fabric markers, etc
- Iron and ironing board

Glossary

Finishing a seam: To enclose the raw edges of a seam by serging or using a zig zag stitch (on a regular sewing machine). With woven fabric, this is necessary to prevent fraying. With knit fabric, it is optional, but offers a much more professional appearance on the inside of the garment. Note: If you have a serger, you can use a 4 thread stitch on knit garments to sew AND finish your seam in one step.

Right side: The right side of a fabric is the side that you want showing on the outside of your garment. "Right sides together" means to sew two pieces together, with the right side of each facing each other.

Seam allowance: The area between the edge of the fabric and your line of stitching.

Selvedge: The factory finished edge of the fabric.

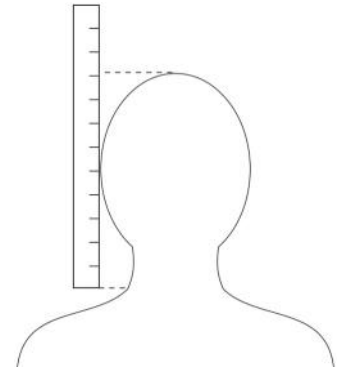
Topstitch: A line of stitching on the outside of a garment, usually very close to an edge or seam. Topstitching can be decorative and/or functional (keeping the edge of a lined garment straight and crisp, etc).

Baste: A line of stitching at a LONG stitch length (4-5) with no back stitching at beginning or end. This is used to keep pieces together temporarily before a seam is sewn with other layers, OR for gathering.

CHOOSING YOUR SIZE

The **Head Circumference** measurement is taken around the head (forehead/side/back of head).

The **Head/Neck Height** measurement is taken as shown to the right, from base of neck to top of head.



IF HEAD CIRCUMFERENCE & HEAD/NECK HEIGHT FALL INTO DIFFERENT SIZES, USE THE HIGHER OF THE TWO, OR SPLIT THE DIFFERENCE & MAKE THE NECK HOLE BIGGER IF NEEDED (SEE PG. 15)

The cape portion is oversized in the toddler sizes (18m XS and 18m) in order to cover their full bodies like a blanket in the car seat. From size 2 up, the cape is drafted to hit around the knee when standing/walking.

The hood fit in all sizes is generous (especially in height), to allow room for growth. For a snug fit, I suggest sizing down.

Note: It is very easy to blend sizes with this pattern—simply use the hood pieces and neck hole template for the head size, and cape piece for the total height size.

TIP: Measuring tapes can stretch out of shape over time—**double check it** against a rigid ruler, yardstick, etc to make sure it is accurate.

BODY	18m XS	18m	2	3	4	5
Head Circumference Inches	18.5"	19.5"	20"	20.25"	20.5"	20.75"
Head Circumference CM	47cm	49.5cm	51cm	51.5cm	52cm	52.5cm
Head/Neck Height Inches	6.25"	6.5"	6.75"	7"	7.25"	7.5"
Head/Neck Height CM	15.75	16.5	17	17.75	18.5	19
TOTAL Height Inches	27.5-30"	30.5-33"	33.5-35.5"	36-38.5"	39-41.5"	42-44.5"
TOTAL Height CM	70-76cm	77-84cm	85-90cm	91-98cm	99-105cm	106-113cm

BODY	6	7	8	10	12	14
Head Circumference Inches	21"	21.25"	21.5"	21.75"	22"	22"
Head Circumference CM	53cm	54cm	54.5cm	55cm	55.5cm	56cm
Head/Neck Height Inches	7.75"	8"	8.25"	8.5"	8.75"	9"
Head/Neck Height CM	19.75	20.25	21	21.5	22.25	23
TOTAL Height Inches	45-47"	47.5-50.5"	51-53"	53.5-55"	55.5-57.5"	58-60"
TOTAL Height CM	114-119cm	120-128cm	129-135cm	136-140cm	141-146cm	147-152cm

FINISHED MEASUREMENTS

The **finished length measurement** is taken from the center of the neck hole down to the bottom hem. It is designed to fall approximately to knee length (longer in the infant sizes for babies that aren't walking, to cover their whole body in the car seat).

The **sleeve length measurement** is taken from left to right, in the center of the poncho. Measure the child's armspan from one wrist to the other (with arms straight out to the sides like an airplane) to compare and choose the ideal poncho width. The width is drafted to have a little extra length in each size, to cover some of the hands when hanging straight, and keep them warm.

GARMENT	18m XS	18m	2	3	4	5
Length (inches)	19.75"	19.75"	19.75"	21.5"	23"	24.75"
Length (cm)	50cm	50cm	50cm	54.5cm	58cm	62.5cm
Width (inches)	40"	40"	40"	42"	44"	46"
Width (cm)	101.4cm	101.5cm	101.5cm	106.5cm	111.5cm	116.5cm

GARMENT	6	7	8	10	12	14
Length (inches)	26.5"	28"	29.75"	31.5"	33"	34.75"
Length (cm)	67cm	71cm	75.5cm	80cm	83.5cm	88cm
Width (inches)	48"	50"	52"	54"	56"	58"
Width (cm)	122cm	127cm	132cm	137cm	142cm	147cm

BUNNY EARS FINISHED LENGTH

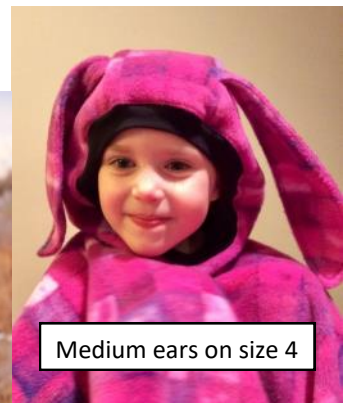
	Small	Medium	Large	Extra Large
Length (inches)	8.5"	10.25"	12.25"	15"
Length (cm)	21.5cm	26cm	31cm	38cm

Small ears on size 18m



Extra Large ears on size 5

Medium ears on size 8



Medium ears on size 4

FABRIC REQUIREMENTS

1 yard = 0.9 meter

*****For HOOD BAND in all sizes, you will need 1/8 yard of knit fabric with 50% stretch and good stretch recovery, such as cotton spandex*****

45" Wide Fabric*

	Yardage PER LAYER
18m	1.5 yards
2	1.5 yards
3	1.75 yards
4	WIDER THAN 45"
5	WIDER THAN 45"
6	WIDER THAN 45"
7	WIDER THAN 45"
8	WIDER THAN 45"
10	WIDER THAN 45"
12	WIDER THAN 45"
14	WIDER THAN 45"

60" Wide Fabric

	Yardage PER LAYER
18m	1.25 yards
2	1.25 yards
3	1.5 yards
4	1.75 yards
5	2 yards
6	2 yards
7	2.25 yards
8	2.25 yards
10	2.25 yards
12	2.5 yards
14**	2.5 yards

*Fabric must be a minimum of 41" wide (after shrinkage/selvages) in sizes 18m/2, and 43" wide in size 3. **Check widths carefully as some flannel/cotton woven is only 40-42" wide.** Make sure to prewash fabric.

Size 14 CAPE is 59" wide, and may not fit on some 60" wide fabrics due to shrinkage or selvedge size. **If your desired fabric is not quite 59" wide after selvedge, I suggest sizing down (width is generous and covers most of the hand) or adding a trim. Make sure to prewash fabric.

LENGTH OF BIAS TAPE/TRIM NEEDED FOR SINGLE LAYER PONCHO EDGES:

	18m	2	3	4	5	6	7	8	10	12	14
YARDS	4	4	4	4.5	4.5	5	5	5.5	5.5	6	6

*****WHEN USING A WIDE TRIM (SUCH AS A WIDE LACE), SIZE DOWN THE CAPE*****

Suggested Fabric:

For the **HOOD BAND**, knit fabric with 50% horizontal stretch and good stretch recovery is required.

For the rest of the poncho (hood and cape, both main and lining), there are two options:

When using **HOOD A** (which has a neck hole smaller than the head circumference), you must use fabric with a minimum of 20% horizontal stretch. 30-50% is ideal. Some types of fleece and minky will work, as well as sweater knits, jersey, French terry, etc. For high stretch fabrics, in the range of 75-100% (such as bamboo/rayon spandex or double brushed polyester), use the elastic casing option to avoid the neck stretching out of shape.

When using **HOOD B**, you can use fabrics with no stretch (such as cotton woven, flannel, softshell, PUL, some types of fleece/minky, etc) OR you can use stretchy fabrics, but I would recommend to also use the optional elastic casing to stabilize the neckline (so it doesn't stretch out of shape) and allow it to fit for a longer duration.

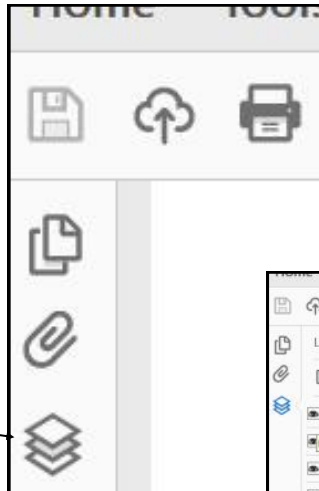
*****PLEASE NOTE, ELASTIC CASING CAN ONLY BE DONE WITH A REVERSIBLE OR LINED HOOD*****

Tips for working with knit fabric

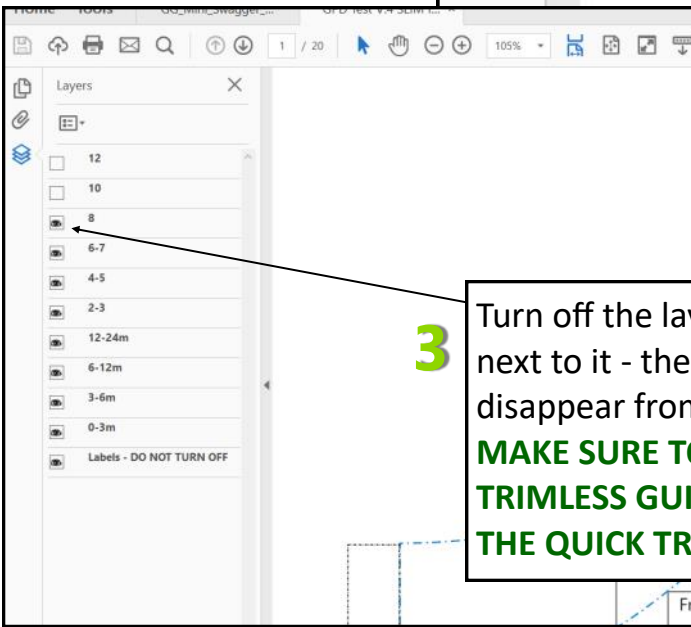
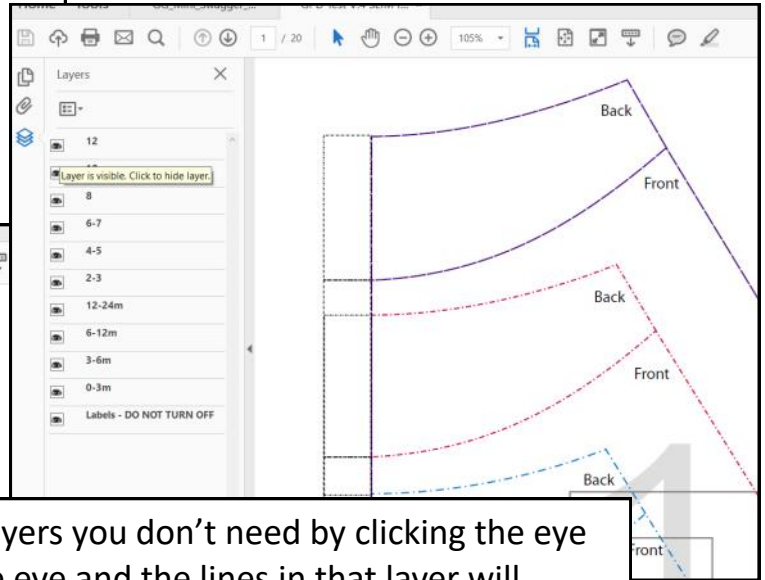
- ⇒ Here is some good information on how to measure the stretch and recovery of your fabric, along with lots of other great tips for sewing with knits: <http://sewingwithknits.com/start-here/>
- ⇒ **Use a stretch needle** in your sewing machine or serger. Some knit fabrics like ballpoint better (mainly sweater knits) but most will do well with a stretch needle.
- ⇒ **Use a stretch stitch** if using a sewing machine. The following link has useful information for choosing the right stitch type—<http://www.sewcanshe.com/blog/2015/8/22/tips-for-sewing-with-knit-fabrics>
- ⇒ **Use a walking foot or a knit foot** on your sewing machine if you can - it helps to feed the fabric through evenly without stretching it. If the fabric is stretched while sewing, it will lead to wavy seams. Minor waviness can usually be fixed with a steam pressing.
- ⇒ It is very helpful to use stretch thread (such as Maxilock Stretch or Woolly Nylon) in your bobbin. It gives your stitches a little extra give and prevents them from popping.

PRINTING THE PATTERN

1 Start by opening the file in **Adobe Reader** (free download if you don't already have it) and click the icon in the top left that looks like this



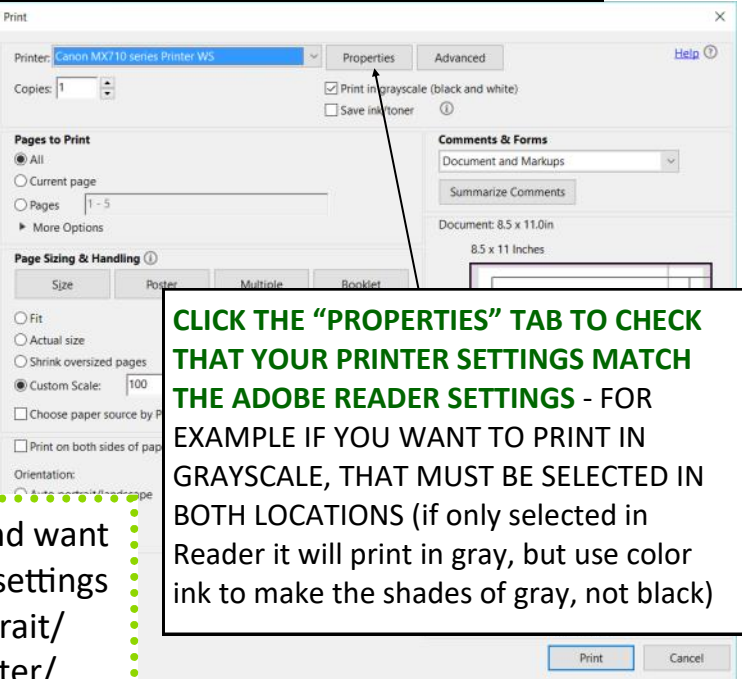
2 Clicking the **LAYERS** icon will open up a list of all the layers in the pattern, including one for each size.



3 Turn off the layers you don't need by clicking the eye next to it - the eye and the lines in that layer will disappear from your screen, and will not print. **MAKE SURE TO KEEP THE LABELS LAYER ON, AND THE TRIMLESS GUIDELINES LAYER IF YOU WANT TO DO THE QUICK TRIMLESS ASSEMBLY.**

Make sure your printer is set to print at actual size OR custom scale 100%, NOT fit to page.

4 Start by printing page 36 of this file and measure the test square to make sure it is accurate. Then print the remaining pages for your size and options (see list of pages to print on next page).



CLICK THE "PROPERTIES" TAB TO CHECK THAT YOUR PRINTER SETTINGS MATCH THE ADOBE READER SETTINGS - FOR EXAMPLE IF YOU WANT TO PRINT IN GRAYSCALE, THAT MUST BE SELECTED IN BOTH LOCATIONS (if only selected in Reader it will print in gray, but use color ink to make the shades of gray, not black)

IMPORTANT: If you are printing on A4 paper and want to use the trimless guidelines, make sure your settings are as follows: PORTRAIT setting (not auto portrait/landscape) and if your printer has an "auto center/rotate" setting, make sure it is turned OFF.

PRINTING THE PATTERN

PAGE NUMBERS TO PRINT

	18m XS	18m	2	3	4	5
Poncho with Hood A (minimum 20% stretch fabric)	36-38, 41-43, 46-47, 51-53, 56-59	36-38, 41-43, 46-47, 51-53, 56-59	36-38, 41-43, 46-47, 51-53, 56-59	36-39, 41-43, 46-47, 51-53, 56-59	36-39, 41-43, 44*, 46-47, 48*, 51-53, 56-59	36-39, 41-44, 46-48, 51-53, 56-59
Poncho with Hood B (no stretch required), optional elastic casing	36-38, 40-43, 44*, 45-47, 49-50, 54-55, 60	36-38, 40-43, 44*, 45-47, 49-50, 54-55, 60	36-38, 40-47, 49-50, 54-55, 60	36-47, 49-50, 54-55, 60	36-47, 48*, 49-50, 54-55, 60	36-50, 54-55, 60

	6	7	8	10	12	14
Poncho with Hood A (minimum 20% stretch fabric)	36-39, 41-44, 46-48, 51-53, 56-59	36-39, 41-44, 46-48, 51-53, 56-59	36-39, 41-44, 46-48, 49*, 51-53, 56-59	36-39, 41-44, 46-49, 51-53, 56-59	36-44, 46-49, 51-53, 56-59	36-39, 41-44, 45*, 46-49, 51-53, 56-59
Poncho with Hood B (no stretch required), optional elastic casing	36-50, 54-55, 60	36-50, 51*, 54-55, 60	36-52, 54-55, 60	36-52, 54-55, 60	36-55, 60	36-55, 60

*Page numbers with the asterisk are needed for trim assembly, but may not be needed for trimless, depending on the size of your printer's margins

OPTIONAL - BUNNY EARS, PAGE 54/59 FOR ALL SIZES USING TRIMLESS METHOD
(ADD 53/60 FOR TRIM METHOD IN SIZE XL)

HOOD BAND - OPTIONAL TO PRINT (CAN USE CUT MEASUREMENTS BELOW),
PAGE 45 FOR SIZE 18M XS/18M, PAGES 45/50 FOR SIZES 2-14

PRINT SAVER CUT MEASUREMENTS FOR HOOD BAND

For wide band, cut one band 3" (7.5cm) tall by width in the chart below

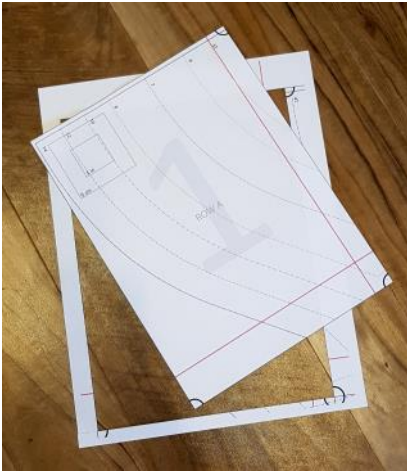
For narrow band, cut one band 1.75" (4.5cm) tall by width in the chart below

	18m XS	18m	2	3	4	5	6	7	8	10	12	14
Inches	16.5"	17"	18"	18.25"	18.5"	18.75"	19"	19.25"	19.5"	19.75"	20"	20.25"
Cm	42cm	43cm	45cm	46.5cm	47cm	47.5cm	48cm	48.5cm	49.5cm	50cm	51cm	51.5cm

PRINTING THE PATTERN

CHOOSING BETWEEN TRIM AND TRIMLESS ASSEMBLY

This pattern can be assembled in two different ways - either by trimming the edges, or overlapping the edges. Here are some advantages and disadvantages of the two different methods:



Trim Assembly - Trim the edges of the paper before taping together: While this method is a bit more time consuming, it offers one huge benefit: if you think you will be using the pattern for multiple sizes, a trimmed pattern is much easier to fold along the tape lines and store. So if you put it together once and leave it intact, and use tracing paper to trace off each size, then you only have to tape it together once. *This is a big*

time saver when you want to make it again later in other sizes.

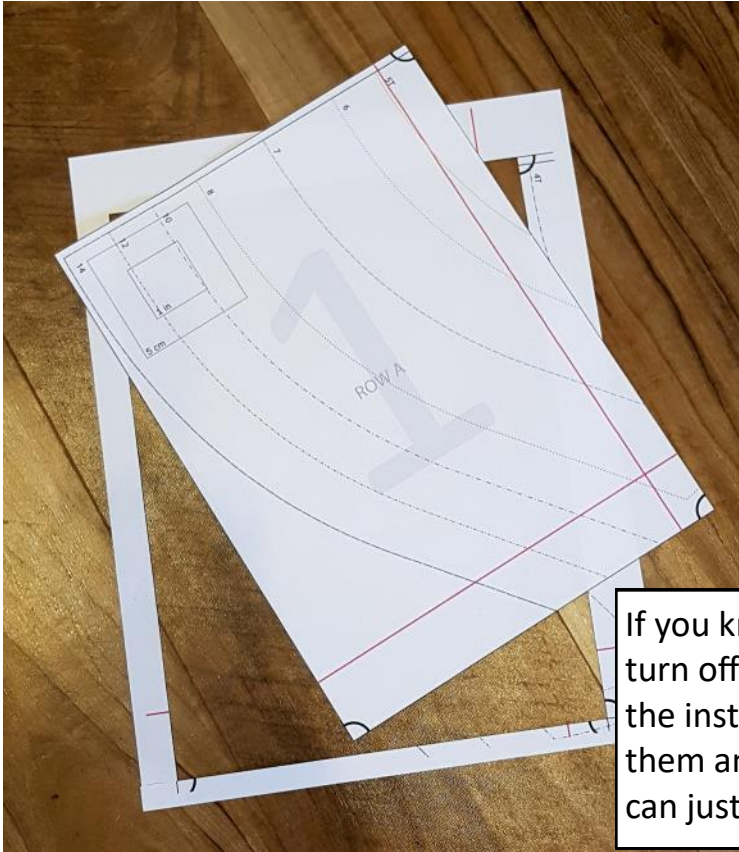
Trimless Assembly - Overlap the edges of the pages and tape or glue them together - there are two ways to do this, which are detailed on pages [12](#) & [13](#).

This method is quicker, but does not fold up as nicely for storage. The quicker of the two trimless methods (method A on [page 12](#)) can also have small inaccuracies, but the second method (method B on [page 13](#)) is accurate and still quicker than trimming.



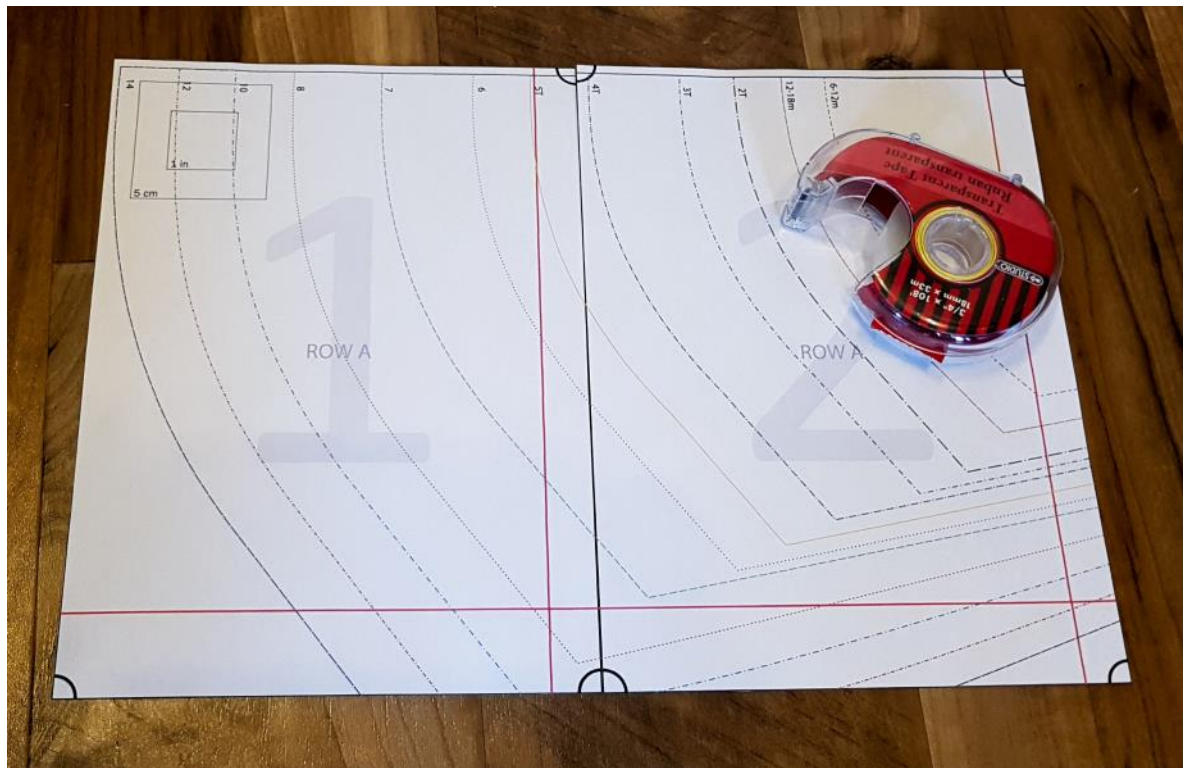
TRIMMED ASSEMBLY

Skip to the [next page](#) for trimless assembly instructions!



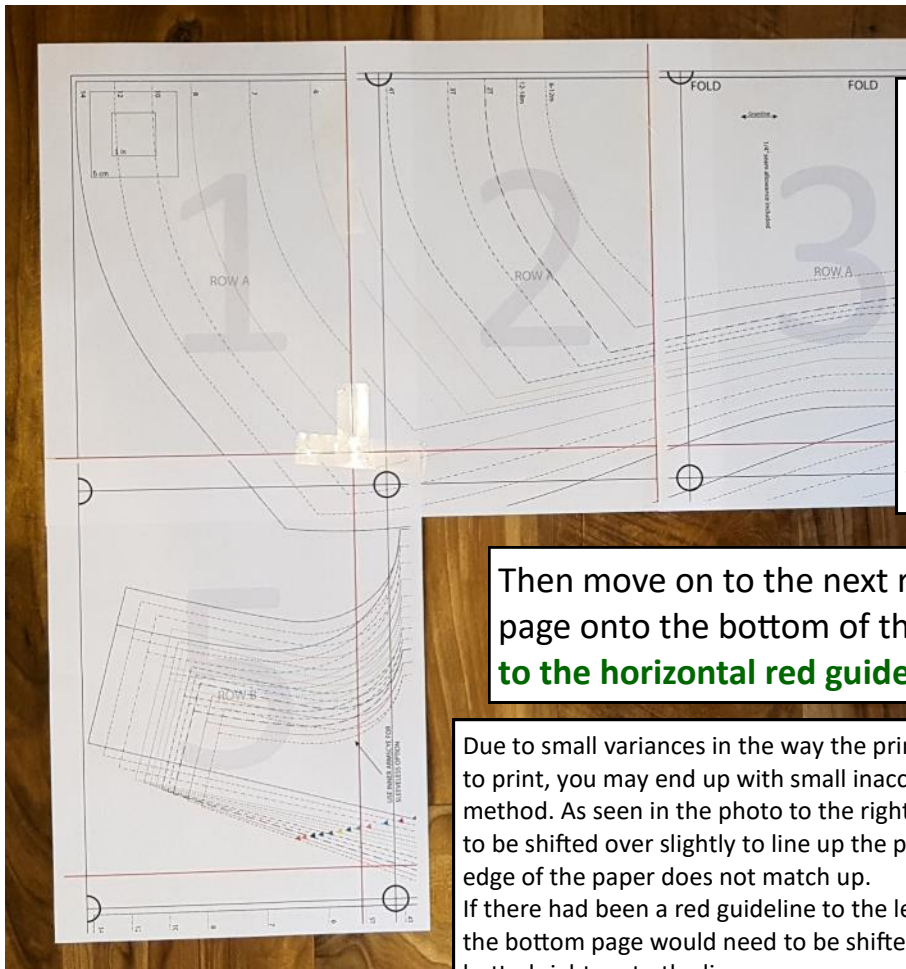
Cut off the edges of each page (around the large rectangle), and then tape the pages together, following the assembly layout on [page 14](#) (skipping pages that aren't needed for your size/options).

If you know you want to do this method, you can turn off the “trimless guidelines” layer (following the instructions on [page 8](#) for layers). If you print them and they aren't working for you though, you can just ignore the red lines.



TRIMLESS ASSEMBLY - METHOD A

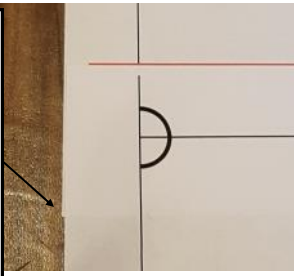
(see [next page](#) for method B)



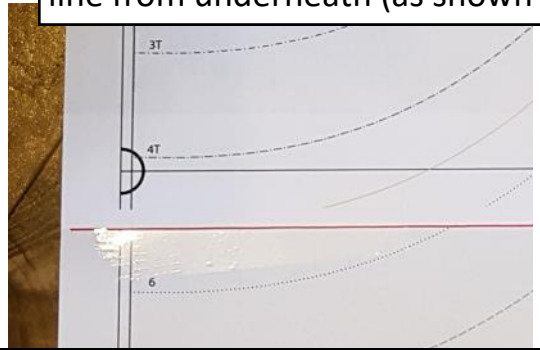
Following the assembly layout (skipping pages that aren't needed for your size/options), layer your pages so the left side of each page overlaps onto the right side of the page to its left, **butting the edge of the paper up to the vertical red guideline.**

Then move on to the next row and layer the top of the page onto the bottom of the page above it, **butting up to the horizontal red guideline.**

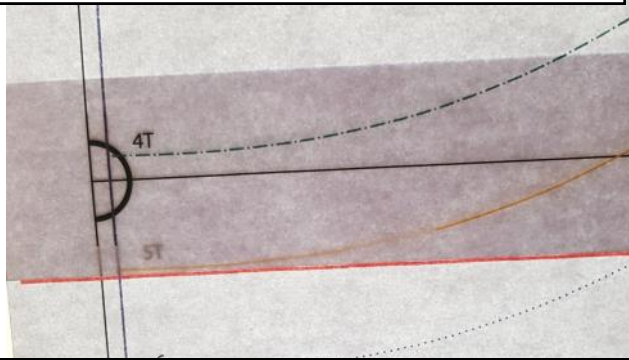
Due to small variances in the way the printer pulls each page to print, you may end up with small inaccuracies using this method. As seen in the photo to the right, the page needed to be shifted over slightly to line up the pattern lines - the edge of the paper does not match up. If there had been a red guideline to the left of these pages, the bottom page would need to be shifted over slightly, not butted right up to the line.



PLEASE NOTE: There will be a small margin of blank area, as most printers don't print right to the edges. In most areas it will be obvious what part of the line is missing, and you can cut without filling it in. In some cases (such as corners) you may want to place your pattern piece on a window and fill in the line from underneath (as shown in below right picture).

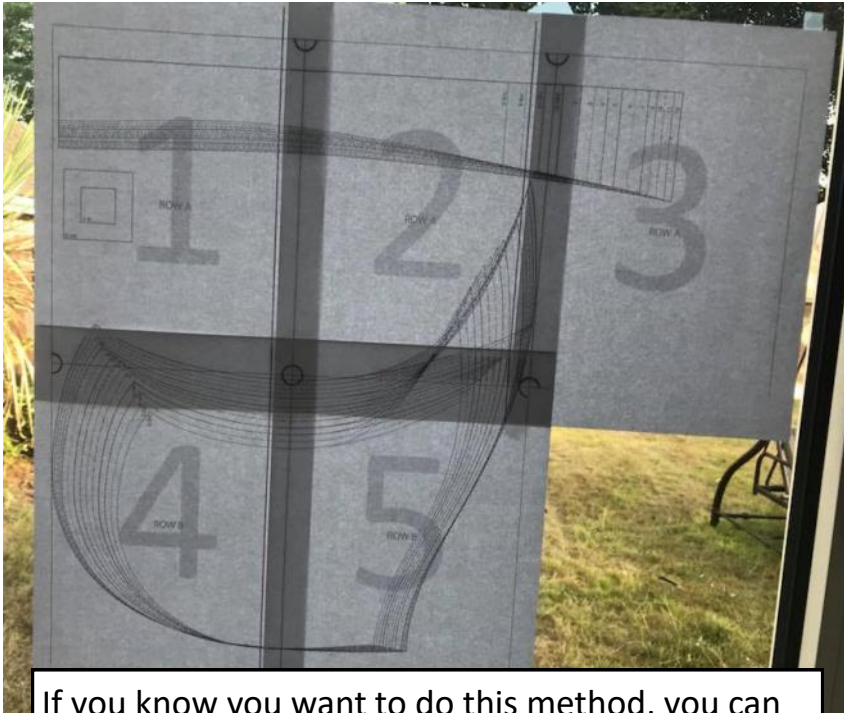


On the floor - bottom of 5T yellow line is not visible in the top margin.



On the window - you can see through the top page and trace the missing part of the line.

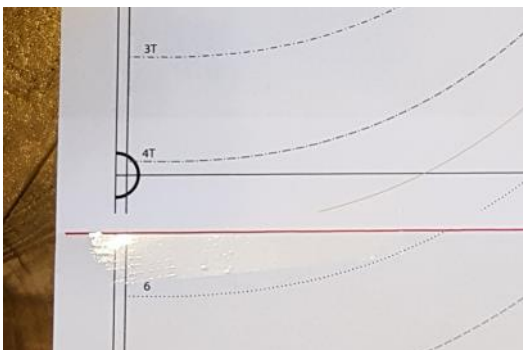
TRIMLESS ASSEMBLY - METHOD B



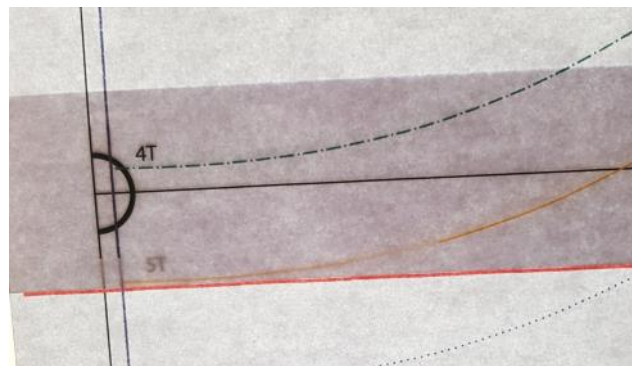
In cases of printers that do not seem to work with the trimless guidelines (too much variance in pulling the pages, or centering the image on A4 paper instead of moving the margin over to match where it would be on letter), you can still do the trimless assembly by looking through the paper and matching up the black rectangle lines and circles in the corners. This is most easily done on a window, but it can be done in a well lit room on a table or floor successfully as well.

If you know you want to do this method, you can turn off the “trimless guidelines” layer (following the instructions on [page 8](#) for layers). If you print them and they aren’t working for you though, you can just ignore them.

PLEASE NOTE: There will be a small margin of blank area, as most printers don’t print right to the edges. In most areas it will be obvious what part of the line is missing, and you can cut without filling it in. In some cases (such as corners) you may want to place your pattern piece on a window and fill in the line from underneath (as shown in below right picture).

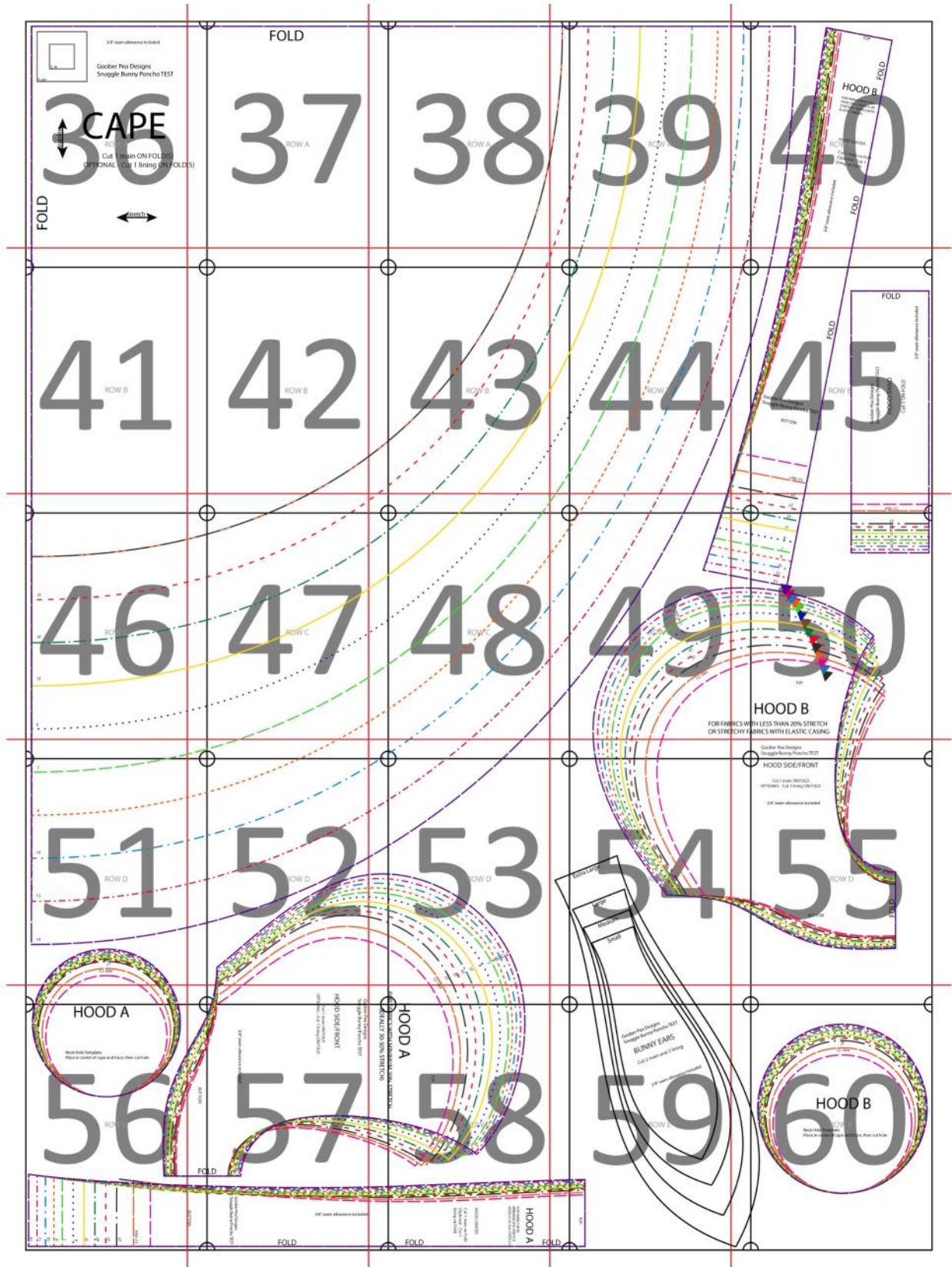


On the floor - bottom of 5T yellow line is not visible in the top margin.



On the window - you can see through the top page and trace the missing part of the line.

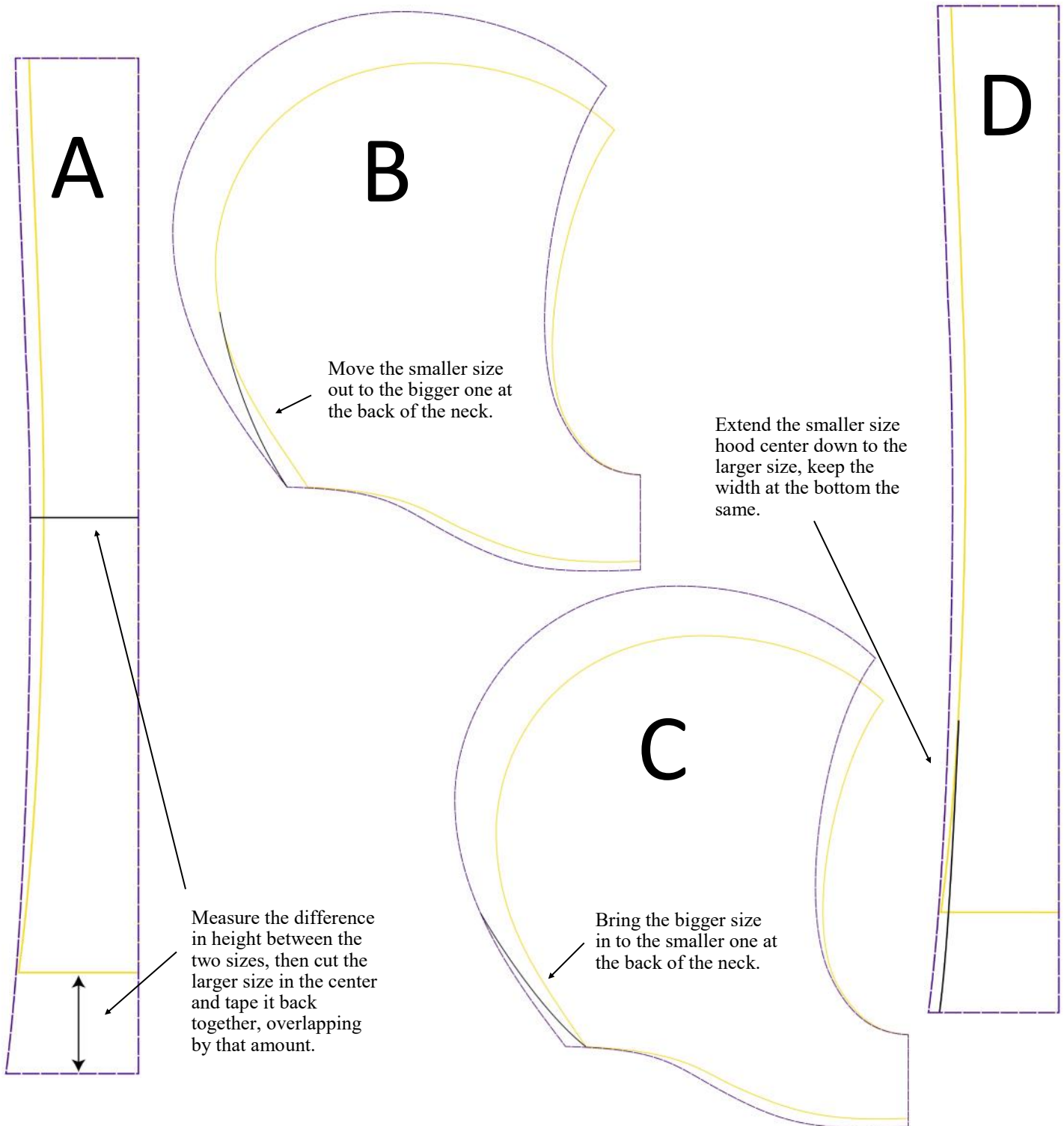
ASSEMBLY LAYOUT



ADJUSTING THE NECK HOLE SIZE

For a **larger neck hole** (useful with elastic casing and non-stretch fabrics to get more room for growth), follow diagrams A & B to blend a smaller hood size to a bigger size's neck hole.

For a **smaller neck hole** (useful for high stretch fabrics without the elastic casing) follow diagrams C & D to blend a larger size hood with a smaller size's neck hole.



CHECKLIST OF PIECES TO CUT

Cut the following pieces for your Snuggle Bunny Poncho:

Hood Side/Front: CUT 1 MAIN (OPTIONAL—CUT 1 LINING)

Hood Center Back: CUT 1 MAIN (OPTIONAL—CUT 1 LINING)

Hood Band: CUT 1 ***50% STRETCH REQUIRED FOR BAND***

Cape: CUT 1 MAIN (OPTIONAL—CUT 1 LINING)

Optional—Bunny Ears: CUT 2 MAIN AND 2 LINING

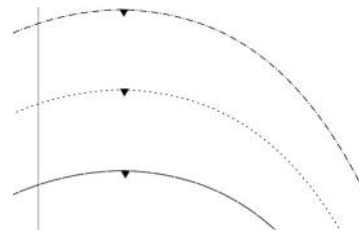
Optional—1/2" Elastic: CUT 1 PIECE 1" SMALLER THAN CIRCUMFERENCE OF CHILD'S HEAD (USE NUMBER FROM SIZE CHART, IF UNABLE TO MEASURE)

PLEASE NOTE, ELASTIC CASING CAN ONLY BE DONE WITH A REVERSIBLE OR LINED HOOD

After cutting out your paper pieces, it is time to cut your fabric!

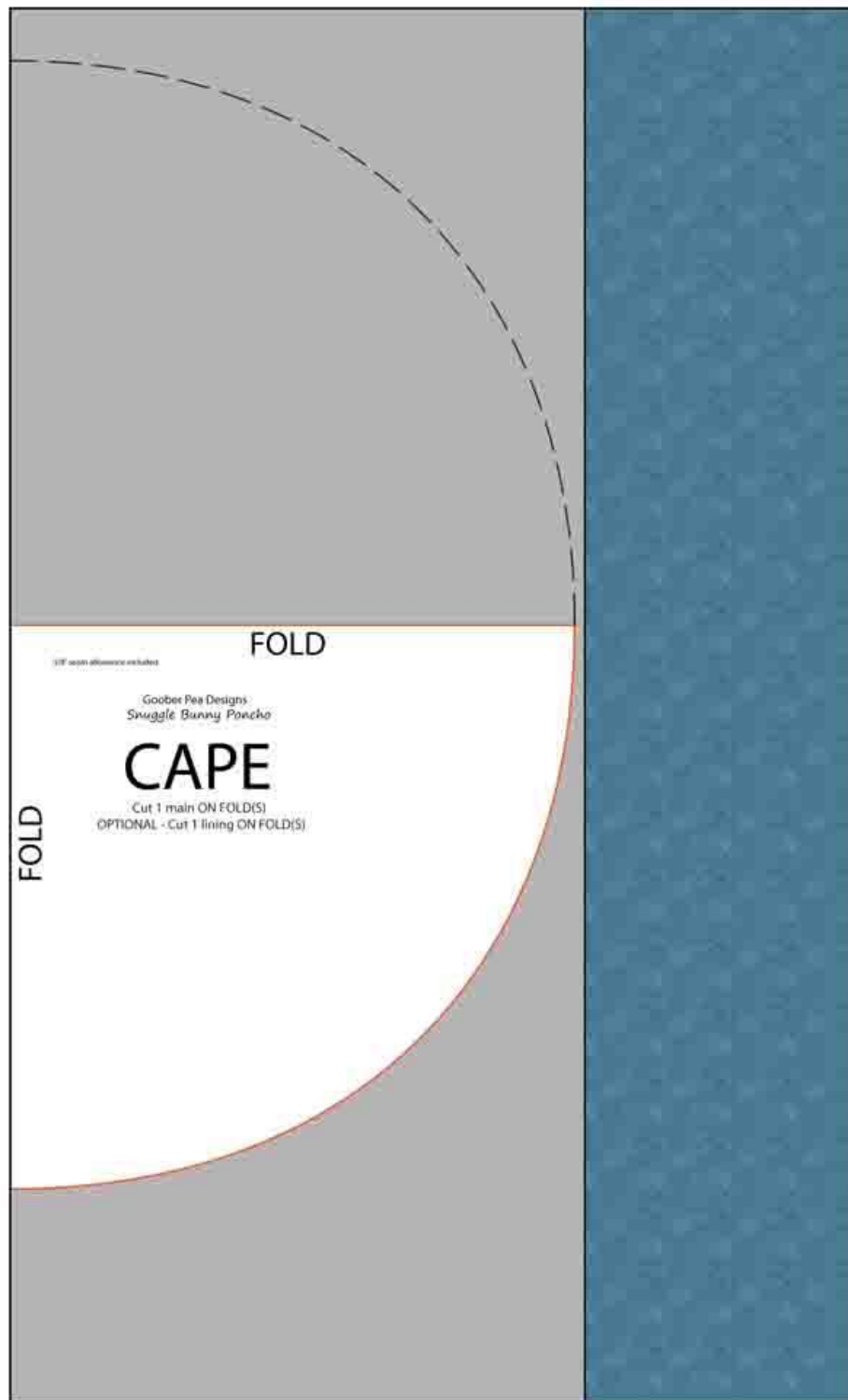
Here are some tips for fabric cutting:

- ⇒ A grain line and stretch line are marked on the pattern pieces. The grain line runs parallel to the selvedge (finished edge of the fabric).
- ⇒ If your fabric's selvedge has been cut off, you can pull the fabric to determine which direction has the most stretch, and then match that up with the stretch line.
- ⇒ The top and bottom of each pattern piece is also marked. **When using a directional printed fabric** (i.e. with pictures on it that you don't want to be upside down on the garment), **make sure** the top of the pattern piece is towards the top of the fabric, and the bottom towards the bottom.
- ⇒ **When you see a triangle or line at the edge of the pattern piece, that is a pattern marking/notch.** You can choose to cut a small notch out of the edge (no more than 1/8 inch deep) or use a washable marker to transfer the pattern marking to the fabric.



CUTTING THE CAPE

The cape pattern piece has two folds marked on it. It CAN be cut on a double fold like a circle skirt, but with such a large piece I find it easier and more accurate to trace the piece and then flip it and cut on just one fold, as shown below.



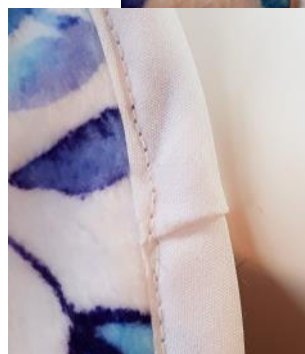
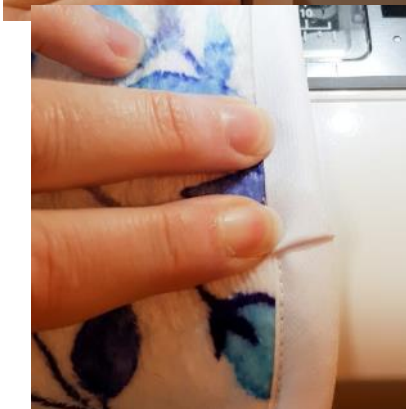
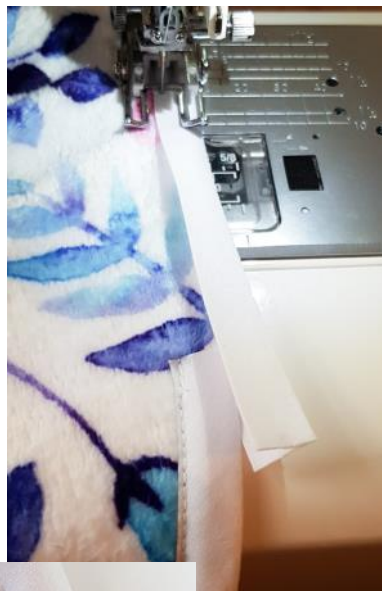
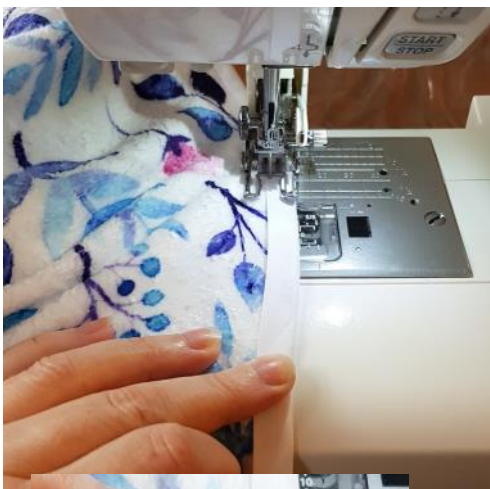
All seam allowances are 3/8 inch unless otherwise stated

SINGLE LAYER CAPE - FINISHING EDGES

(skip to following page if doing a **double layer basic cape**)

There are several ways to finish the edges of a single layer poncho. This tutorial shows how to apply double fold bias tape, but you can also sew trim to the edges (make sure you finish the edges of woven fabrics first, so they don't fray), apply single fold bias tape, or you can just leave the edges raw for fabrics like fleece that don't fray. With fleece, you could even cut a fringe into the edges.

To apply double fold bias tape, simply slip it over the edge (the slightly wider side should be underneath, against the wrong side) and sew close to the edge of the tape. I find it easiest to do without pinning/clips, after the first few inches.

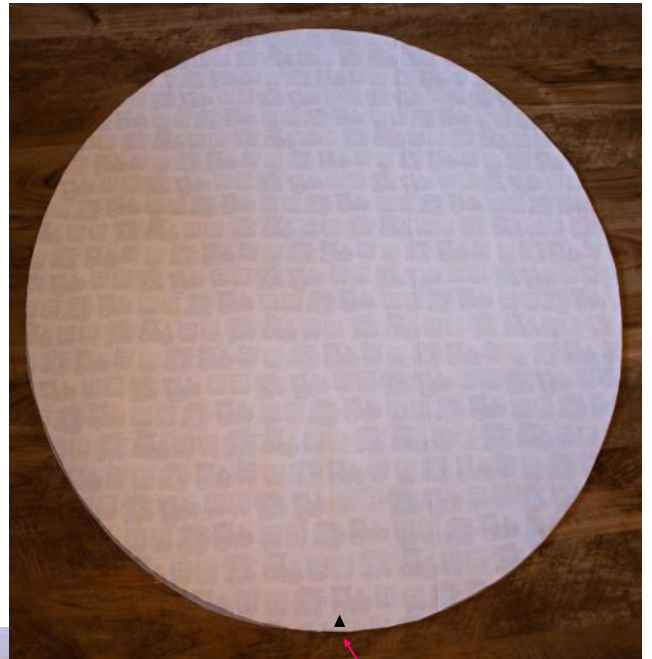


When you get back around to where you started, cut the tape to have about 1" overlap. Then fold it in 1/2" at the end as shown, to conceal the raw edges, and complete sewing the circle.

All seam allowances are 3/8 inch unless otherwise stated

DOUBLE LAYER CAPE (skip to following page to cut neck hole if doing a single layer cape)

Place your two cape pieces right sides together. Make sure there are no folds or bubbles - starting from the center, smooth out towards the edges, and line up the edges as best as possible (due to cutting inaccuracies or fabric stretching, your edges may not line up perfectly - after pinning, you can trim them).



Align the two pieces at the center bottom notch/placement mark. If you missed placing this marking when you were cutting, you will want to do it now - it will make placing the hood correctly much easier.



STARTING IN THE CENTER, place pins through both layers, continuously smoothing the fabric and working your way towards the outside edges. Extra long pins are very useful if you have them. More slippery fabrics (such as minky) will require more pinning - the above example had one minky layer. If both were fleece, I would not have used as many pins.

Trim the edges so they match, then sew around the entire edge using a 5/8" seam allowance. Remove all the pins except a couple in the center.

CONSTRUCTION: CAPE

All seam allowances are 3/8 inch unless otherwise stated

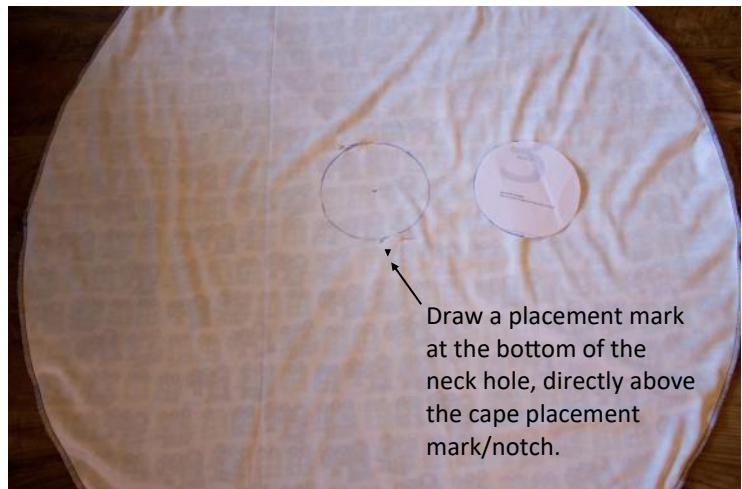
NOTE: The reason this pattern uses a neck hole template (instead of cutting the neck hole as part of the cape pattern piece) is that many of the recommended fabrics like to “grow” (stretch out of shape and become bigger). Cutting the neck hole after sewing the cape helps keep the neck hole the correct size, and aligns the holes of both layers accurately when one fabric grows and the other does not.

NECK HOLE

Place the neck hole template on your cape, lining up the center mark of the template with the center mark of the cape. NOTE: If you missed placing the mark during cutting, you will need to fold the cape in both directions to find the center.

Trace around the edges of the template with chalk or washable marker, and place a mark at the bottom of the neck hole, directly above the center bottom cape mark.

Then cut out the hole carefully, through both layers (or just one, if doing the single layer cape).



FOR DOUBLE LAYER CAPE ONLY:
Flip your cape right side out through the neck hole. Smooth the outside edges (you can press if you are using a fabric that can be pressed), then topstitch them.

TRANSFER THE PLACEMENT MARK ON THE NECK HOLE TO THE RIGHT SIDE OF THE FABRIC, OR CUT A SMALL NOTCH



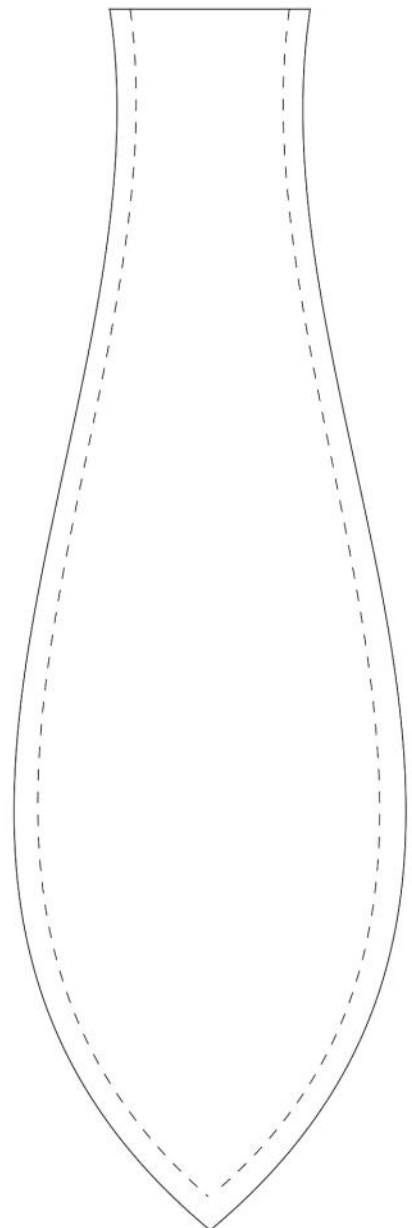
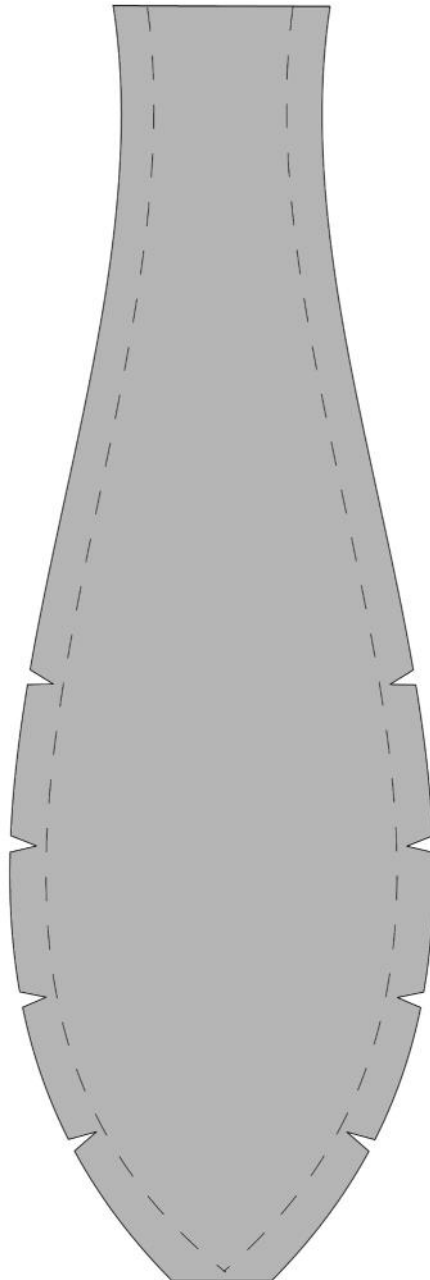
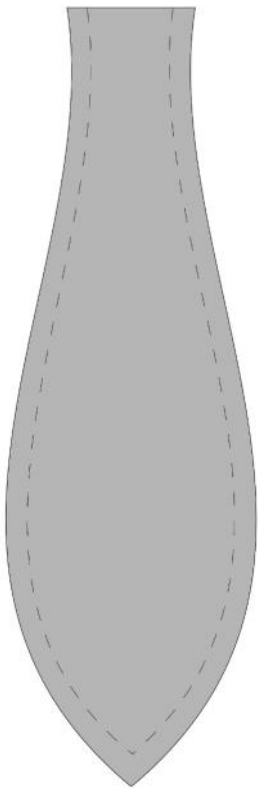
CONSTRUCTION: HOOD

All seam allowances are 3/8 inch unless otherwise stated

OPTIONAL BUNNY EARS

(skip to [following page](#) if not doing ears)

Place one main and one lining right sides together and sew around the curved edges as shown below, pivoting at the bottom point.



Clip the curves
and tip, turn
right side out,
and press.

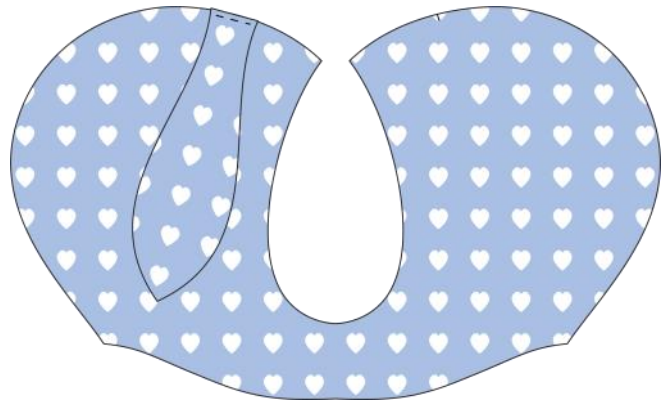
Optional:
topstitch

All seam allowances are 3/8 inch unless otherwise stated

HOOD CONSTRUCTION

IF YOU ARE DOING BUNNY EARS -

Baste each ear to the main side of the hood side/front piece, at the notches— with the LINING side of the ear facing the right side of the hood.



ALL HOODS - Pin/clip the hood center to one side of the main hood piece, right sides together, as shown. The top of the hood center is the narrower end, and it goes at the top of the “U” shape.



NOTE: If you did bunny ears, they will now be sandwiched between the hood side and hood center.

Sew the seam, then repeat on the other side.

Repeat for the other layer of the hood, if you are lining it/making a reversible poncho.



JUMP TO NEXT STEP:

[Reversible Hood](#)

[Unlined/Exposed Seam Hood](#)

CONSTRUCTION: HOOD

All seam allowances are 3/8 inch unless otherwise stated

HOOD BAND - REVERSIBLE HOOD

Fold hood band so short ends are right sides together, and sew the short end.



Divide the face hole into evenly spaced quarters (top center, bottom center, and sides) and mark with clips or pins.

Do the same on one edge of the band, starting with the seam.



Place the band into the face hole, right sides together, matching up the marked spots, and pin/clip. Match the band seam with the **BOTTOM CENTER** of the face hole.

Sew, stretching the band gently to match the size of the face hole.

Next, match up the other face hole with the other side of the band, in the same way, and sew.



CONSTRUCTION: HOOD

All seam allowances are 3/8 inch unless otherwise stated

HOOD BAND - REVERSIBLE HOOD

If your fabric can be pressed (you may need to use a pressing cloth to avoid melting fleece or minky), press the seam allowances so that one is TOWARDS THE BAND, and the other is AWAY FROM THE BAND.

Then place your hood lining inside the main hood as shown, folding the band in half and matching up the face hole seams.



Carefully pin along the seam (on the band side) THROUGH ONE SEAM ALLOWANCE - the other one should be facing the other direction, on the other side of the seam.

Next, topstitch on the hood side (not the band), carefully feeling with your fingers and making sure the seams match up, and you are sewing through ONE SEAM ALLOWANCE.



JUMP TO NEXT STEP:

[Elastic Casing for Hood \(Optional\)](#)
[Attaching Hood](#)

CONSTRUCTION: HOOD

All seam allowances are 3/8 inch unless otherwise stated

HOOD BAND - EXPOSED SEAM

DOUBLE LAYER ONLY - First place your hood and hood lining wrong sides together, and baste around the face hole.

BOTH VERSIONS - Sew the band right sides together along the short end. Then fold it wrong sides together as shown, and divide it into quarters using pins or clips, starting with the seam.



With the hood inside (or lining) out, divide the face hole into quarters in the same way, marking the center bottom and center top, then the sides.

Place the band inside the face hole, matching the seam with the center bottom of the face, and then matching the remaining marked quarters and pin/clip them together.

Sew, gently stretching the band sections to be the same length as the hood sections.

Optional: topstitch the seam (on the hood side, not the band) after turning the hood right side out.



JUMP TO NEXT STEP:
[Elastic Casing for Hood \(Optional\)](#)
[Attaching Hood](#)

CONSTRUCTION: HOOD

All seam allowances are 3/8 inch unless otherwise stated

ELASTIC CASING (OPTIONAL)

For a lined hood with an elastic casing (reversible or non-reversible), first baste the bottom edges of the hood together, 1/4" from the edge, leaving a 1" gap somewhere.

Then, sew a line of stitching 1" above the basting line, all the way around, to create a casing.

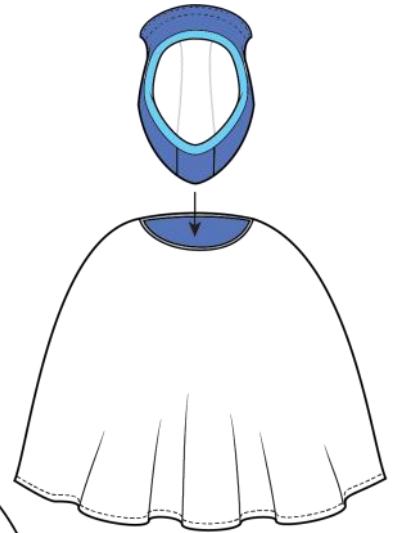


CONSTRUCTION: PONCHO

All seam allowances are 3/8 inch unless otherwise stated

ATTACHING THE HOOD TO THE CAPE - WITH ELASTIC CASING (SKIP TO FOLLOWING PAGE IF NOT USING ELASTIC)

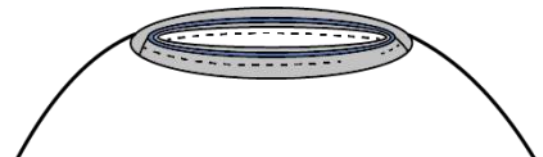
Place the hood inside the neck hole of the cape, **MAIN FABRIC TO MAIN FABRIC**. Match up the center front of the hood with the placement mark/notch for the center front of the neck hole.



EXPOSED SEAM METHOD—Pin or clip all the raw edges at the neck hole (hood and cape) together. Sew all the way around EXCEPT THE AREA OF THE GAP IN THE BASTING ON THE HOOD.



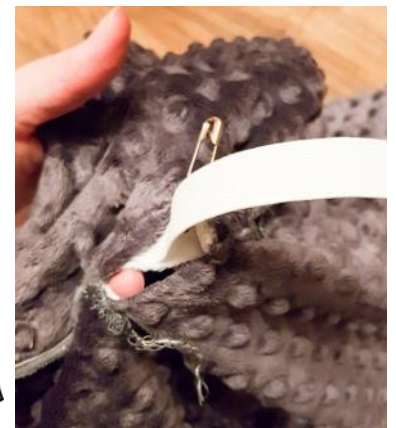
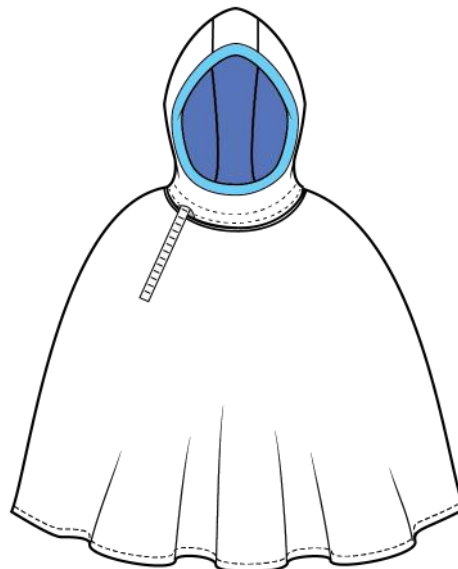
REVERSIBLE METHOD—Pin or clip the hood layers ONLY TO THE MAIN CAPE NECKHOLE, not the lining. Sew all the way around EXCEPT THE AREA OF THE GAP IN THE HOOD.



BASTING ON THE

Next, using a safety pin, guide your elastic between the hood layers and through the casing, ensuring it does not get twisted. Then stitch the two ends of the elastic together.

Sew the gap closed, to complete the seam, still leaving the cape lining out if you're doing the reversible method.

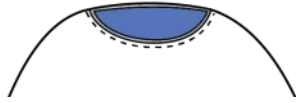


For an exposed seam—finish the seam by serging or using a zig zag stitch, and you're done! For the reversible poncho—skip to [page 29](#) to sew your hood lining.

CONSTRUCTION: PONCHO

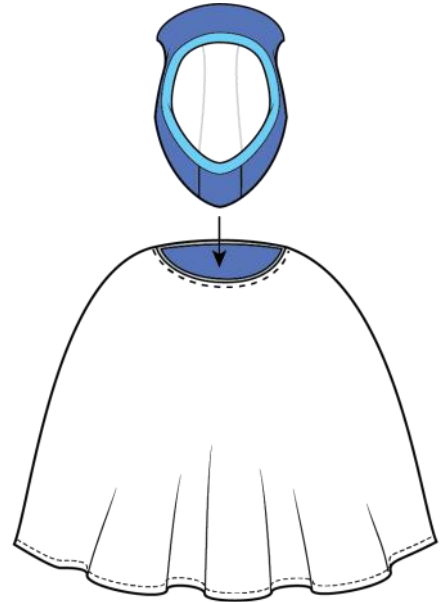
All seam allowances are 3/8 inch unless otherwise stated

ATTACHING THE HOOD TO THE CAPE - NO ELASTIC



Start by basting the edges of the neck hole together (this should already be done if you made a zippered cape) at 1/4" seam allowance.

Next, place the hood inside the neck hole of the cape, **MAIN FABRIC TO MAIN FABRIC**. Match up the center front of the hood with the placement mark/notch for the center front of the neck hole.



EXPOSED SEAM METHOD—Pin or clip all the raw edges at the neck hole (hood and cape) together. Sew all the way around. Finish the seam with a zig zag stitch or by serging, and you're done!



REVERSIBLE METHOD—Pin or clip the cape layers **ONLY TO THE MAIN HOOD EDGE**, not the lining. Sew all the way around (excluding the hood lining from the seam).



CONSTRUCTION: PONCHO

All seam allowances are 3/8 inch unless otherwise stated

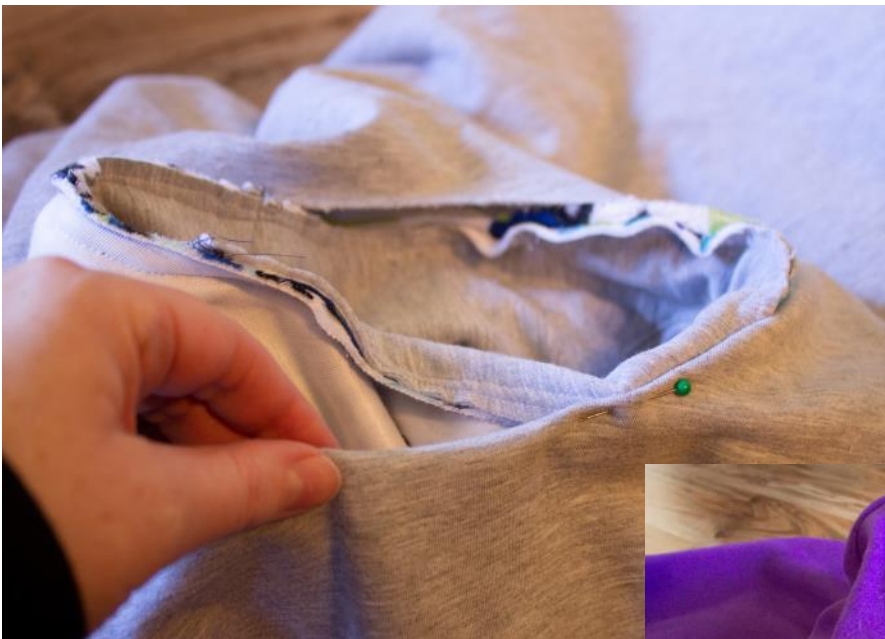
SEWING THE LINING - REVERSIBLE PONCHO

Fold the remaining LINING raw edge under by 3/8" (1cm) and pin it to the hood* or cape**, so it covers the stitches.

*For an elastic hood the remaining raw edge will be on the cape—fold it under and pin it to the hood.

**For a hood without elastic the remaining raw edge will be on the hood—fold it under and pin it to the cape.

Hand stitch it in place all the way around using an invisible ladder stitch.



See video of this step here:
www.vimeo.com/301092602

QUICK CONSTRUCTION SUMMARY

All seams are 3/8" unless otherwise stated RST = right sides together

SEE PAGES 18-29 FOR MORE DETAILED INSTRUCTIONS

1. SINGLE LAYER CAPE - finish edges with bias tape or trim, or leave raw if desired for fabrics that do not fray
2. DOUBLE LAYER CAPE - place the two cape layers RST, smoothing from center outwards to make sure there are no folds/bumps, and pin extensively to prevent shifting. Trim edges to match, if necessary. Sew around edges using 5/8" seam allowance.
3. BOTH CAPES - find the center and cut a neck hole using the template. Turn double layer cape right side out and topstitch edges.
4. OPTIONAL BUNNY EARS - place 1 main and 1 lining RST and sew the long edges, pivoting at the bottom tip. Clip seam allowance at the tip and along curves. Turn right side out and press. Optional: topstitch. Repeat with other ear.
5. HOOD - sew hood center to the long curves of the hood sides. If doing bunny ears, sandwich them into the seam at the marked notch (main side to hood center) on the main hood (not lining).

SKIP TO FOLLOWING PAGE FOR UNLINED HOOD, OR LINED HOOD WITH EXPOSED SEAM (NOT REVERSIBLE)



6. REVERSIBLE HOOD - sew short ends of the hood band RST, then divide it into quarters (marking with pins or clips) on one raw edge. Divide the face hole of one layer of the hood into quarters as well, marking the center bottom and center top, then the sides. Sew the hood band to the face hole, matching up the quarters (band seam to bottom center of face hole) and stretching the band gently to match the hood as you sew. Repeat with the other edge of the band, and the other layer of the hood.



7. REVERSIBLE HOOD - place hood lining inside main hood and pin face hole seams together, then topstitch. See page 24 for more details on where to put the seam allowances to minimize thickness of layers and get a smooth topstitch.



QUICK CONSTRUCTION SUMMARY

All seams are 3/8" unless otherwise stated RST = right sides together

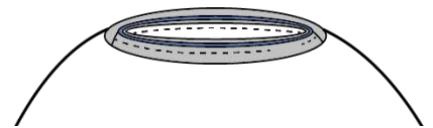
SEE PAGES 18-29 FOR MORE DETAILED INSTRUCTIONS

Poncho with Elastic Casing in Hood

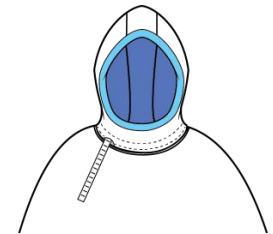
8. OPTIONAL ELASTIC CASING - baste bottom edges of hood together at 1/4" seam allowance, leaving a 1" gap somewhere. Then sew a line of stitching 1" above the basting line, all the way around, to create the casing.



9. Place the hood inside the neck hole, MAIN FABRIC TO MAIN FABRIC. Match up the center front of the hood with the placement mark/notch for the center front of the neck hole. EXPOSED SEAM: Pin or clip all the raw edges at the neck hole (hood and cape) together. REVERSIBLE METHOD: Pin or clip the hood to the MAIN CAPE LAYER ONLY at the neck hole.



10. Sew all the way around where you pinned, EXCEPT THE AREA OF THE GAP IN THE BASTING ON THE HOOD.



11. Insert elastic into casing. Sew elastic ends together, then complete the seam. If you did an exposed seam, finish it with a zig zag or a serger, and you're done!

Poncho without Elastic

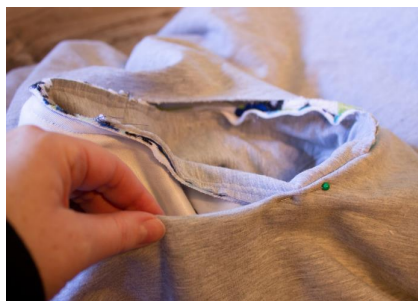
12. Baste the neck hole together. Then place the hood inside the neck hole, MAIN FABRIC TO MAIN FABRIC. Match up the center front of the hood with the placement mark/notch for the center front of the neck hole. EXPOSED SEAM: Pin or clip all the raw edges at the neck hole (hood and cape) together. REVERSIBLE METHOD: Pin or clip the cape to the MAIN HOOD LAYER ONLY at the neck hole.



13. Sew all the way around where you pinned. If you did an exposed seam, finish it with a zig zag or a serger, and you're done!

Finishing a Reversible Poncho

14. Attach the lining to the neck hole by folding the remaining raw edge under and pinning it to the seam. Use a ladder stitch to hand stitch it in place, and you're done!



Goober Pea Designs
sewing patterns



How to add arm holes to ANY car seat poncho!

Free tutorial on our blog, with step by step instructions and photos showing how to add armholes to any already completed poncho!

<https://gooberpeadesigns.com/how-to-add-arm-holes-to-any-car-seat-poncho/>

Snuggle Bunny Poncho 
BY GOOBER PEA DESIGNS



SIZES: 18M TO 14 YOUTH



[Full version](#) with extra features for the Snuggle Bunny Poncho—make it without the hood band, add a brim, and/or add a zipper to the front or back!

NOTE: Poncho still pulls over the head—the zipper opens from the bottom, giving easy access to do carseat buckles, or to allow the back to drape open to the sides instead of flipping up over the back of the carseat.

INSPIRATION

The following pages contain photos for inspiration for the Snuggle

Amanda Blurton

Amy Lemoine

Amy PH

Amy Sissons

Anne Stankovic

www.facebook.com/orleansont

Brenda Kalteck

www.instagram.com/olivergraycreations

Brenna Smith

Caroline Gaddy

www.sewlikeasloth.wordpress.com

Carol Parker

Charlene Dubeau

Christine H

www.instagram.com/snowflakesews

Connie Dorgeloos Vandehoef

Deanna Bruce

Diana Wright

Erin Gilsean

Felicia Mercer

www.sewingwithrascals.com

Flora Stephenson

Francesca Ingram

Holly Morales

Jess Brzoznowski

Johnna Martinez

www.facebook.com/johnnascreations

Josefine Kristmansson

Judith Kustermans

www.facebook.com/koolkidscustomclothing

Judith Weinstein Blumert

Kary Davis

Kristen Rosado

www.facebook.com/crazyasstitch

Kristi Donovan

Kristy Finnigan

Lacey Neuman Bissonnette

www.facebook.com/acraftylittlestitch

Lindsay May Stroup

Lisa Rybka

Louisa Westlake

Marissa Klinessmith

Meag Columbus

Melisa Harry

Melissa Elisabeth

Michelle Arthurs/Dianne Hudson

www.facebook.com/arialeighboutique

Michelle Weibling Nolte

Milk-Ah Shey

Monica Shade

Rebecca Watson

Robynne L

www.instagram.com/bynn3r

Sarah Rust

Sheila Charrette Kvern

Sheila King

Shelley Gajus

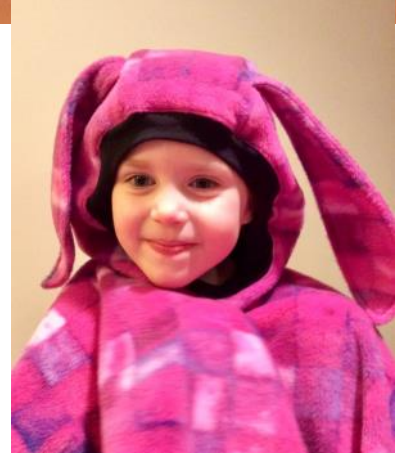
Stephanie Adkins

Thank you all!

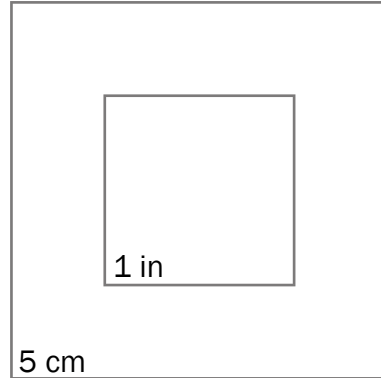
INSPIRATION



INSPIRATION



PLACE A MARK AT THE CORNER,
(WHICH WILL BE THE CENTER OF
YOUR CAPE) USING CHALK OR
WASHABLE MARKER.



Goober Pea Designs
Snuggle Bunny Poncho

CAPE

ROW A

Cut 1 main ON FOLD(S)
OPTIONAL - Cut 1 lining ON FOLD(S)

Grainline

FOLD

At this mark in the bottom left corner, place a notch
or pattern marking, to mark the center front of the cape

Stretch

***IMPORTANT
seat) for any
to easily rem
not use wh
It is meant t
only, when

For g
it is b
ONE f
flip it
(as sh
FOLD

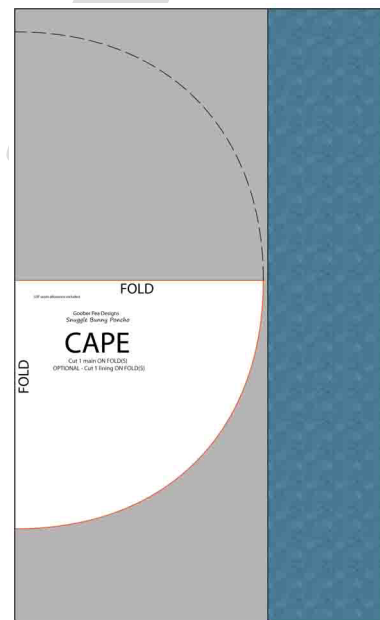
FOLD

3/8" seam allowance included

IMPORTANT - do not use unsupervised (such as in a car seat) for any child that does not have adequate motor control to easily remove the hood if it moves onto their face. Also, do not use when car is fully warmed, due to risk of overheating. It is meant to be used at very low temperatures for short trips only, when the car is not fully warmed

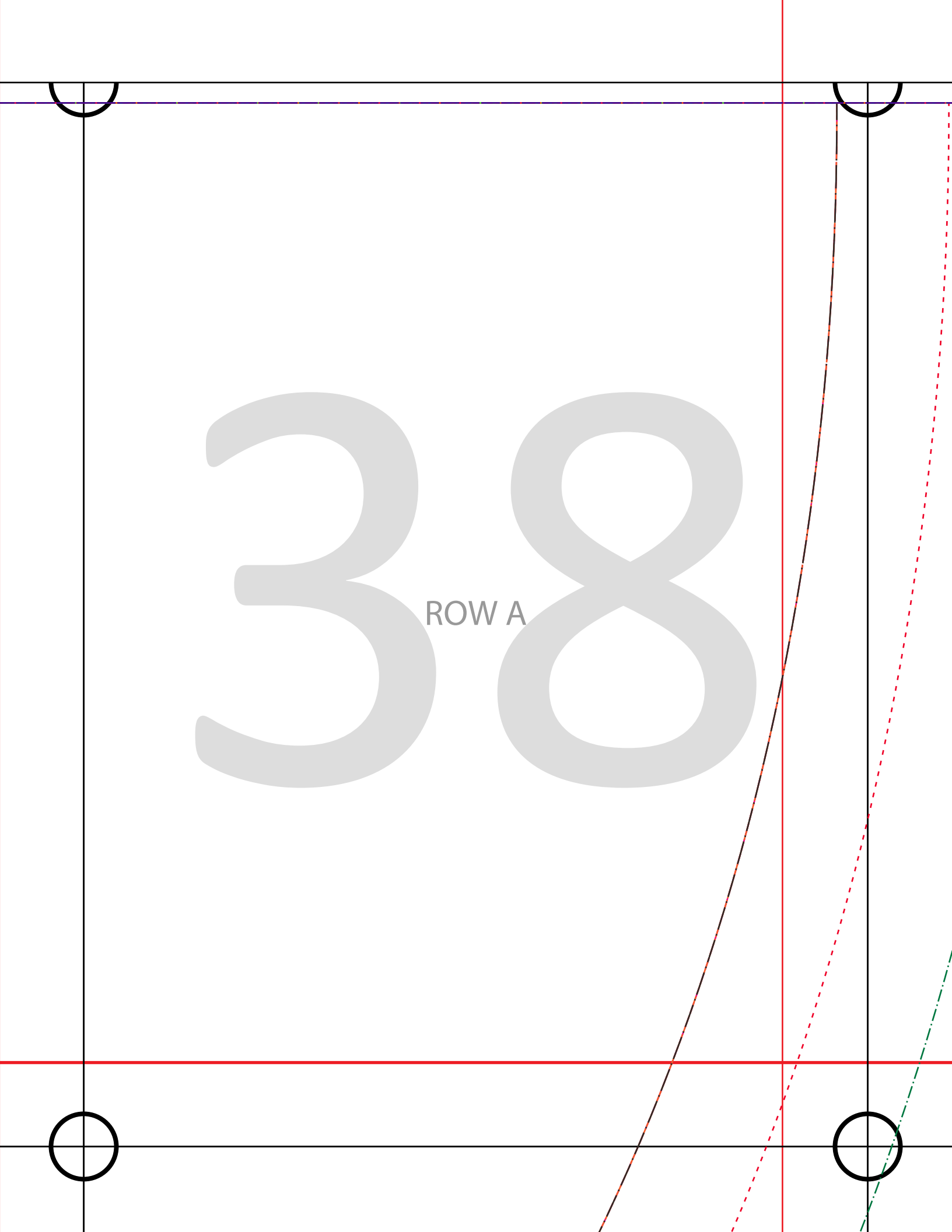
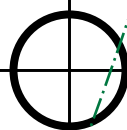
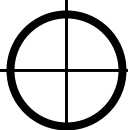
ROW A

For greatest cutting accuracy, it is best to place this piece on ONE fold, trace the curve, then flip it and trace the curve again (as shown). DO NOT CUT ALONG FOLD LINES.



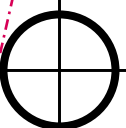
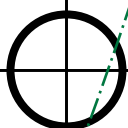
38

ROW A



39

ROW A



TOP

FOLD

HOOD B

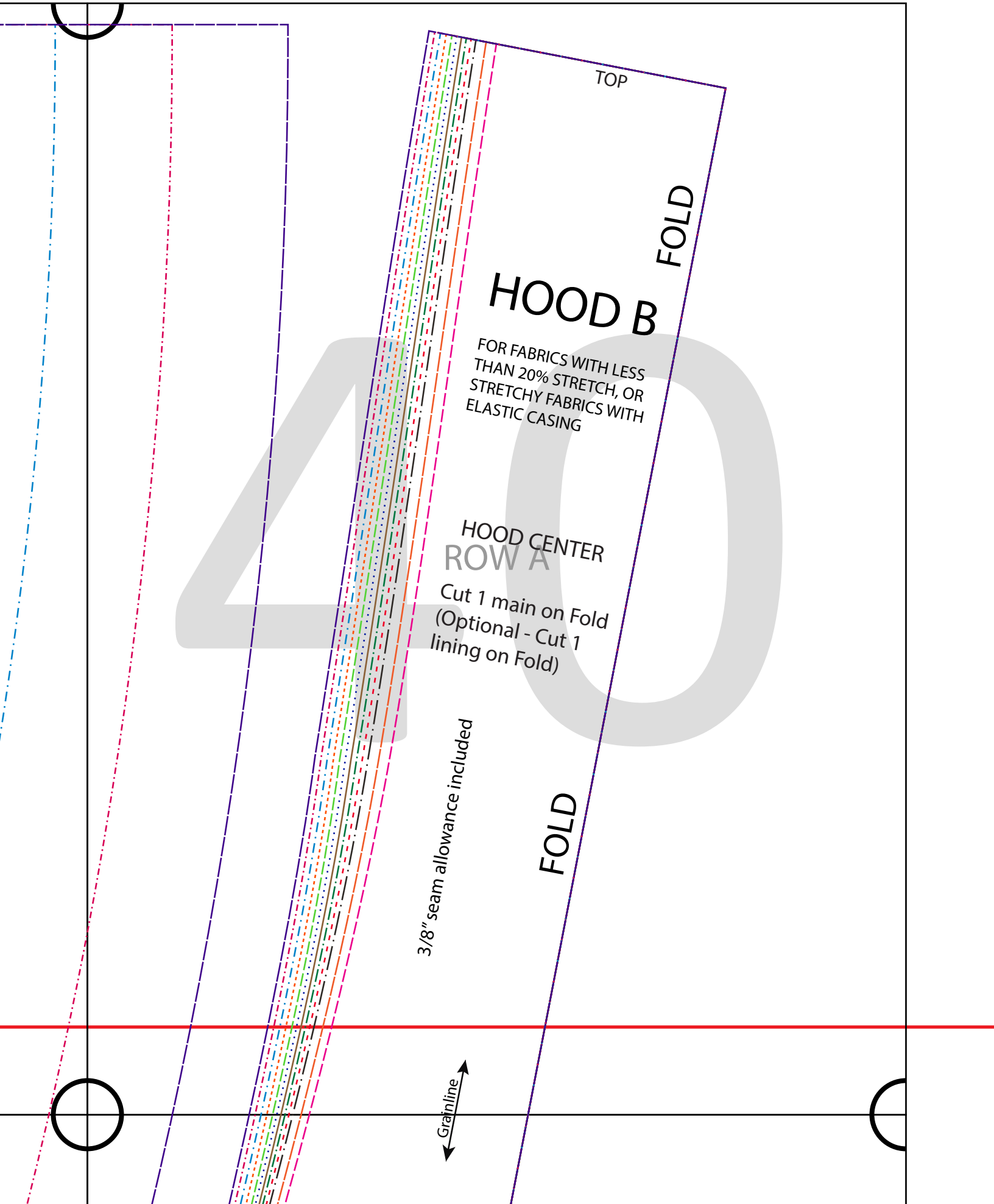
FOR FABRICS WITH LESS THAN 20% STRETCH, OR STRETCHY FABRICS WITH ELASTIC CASING

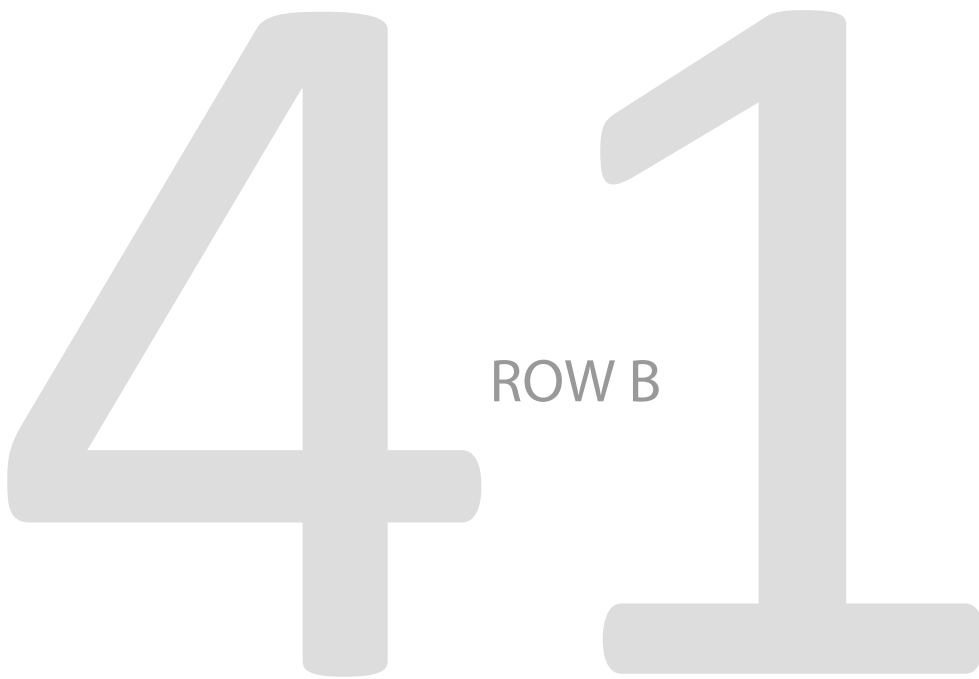
HOOD CENTER
ROW A
Cut 1 main on Fold
(Optional - Cut 1 lining on Fold)

3/8" seam allowance included

FOLD

Grainline





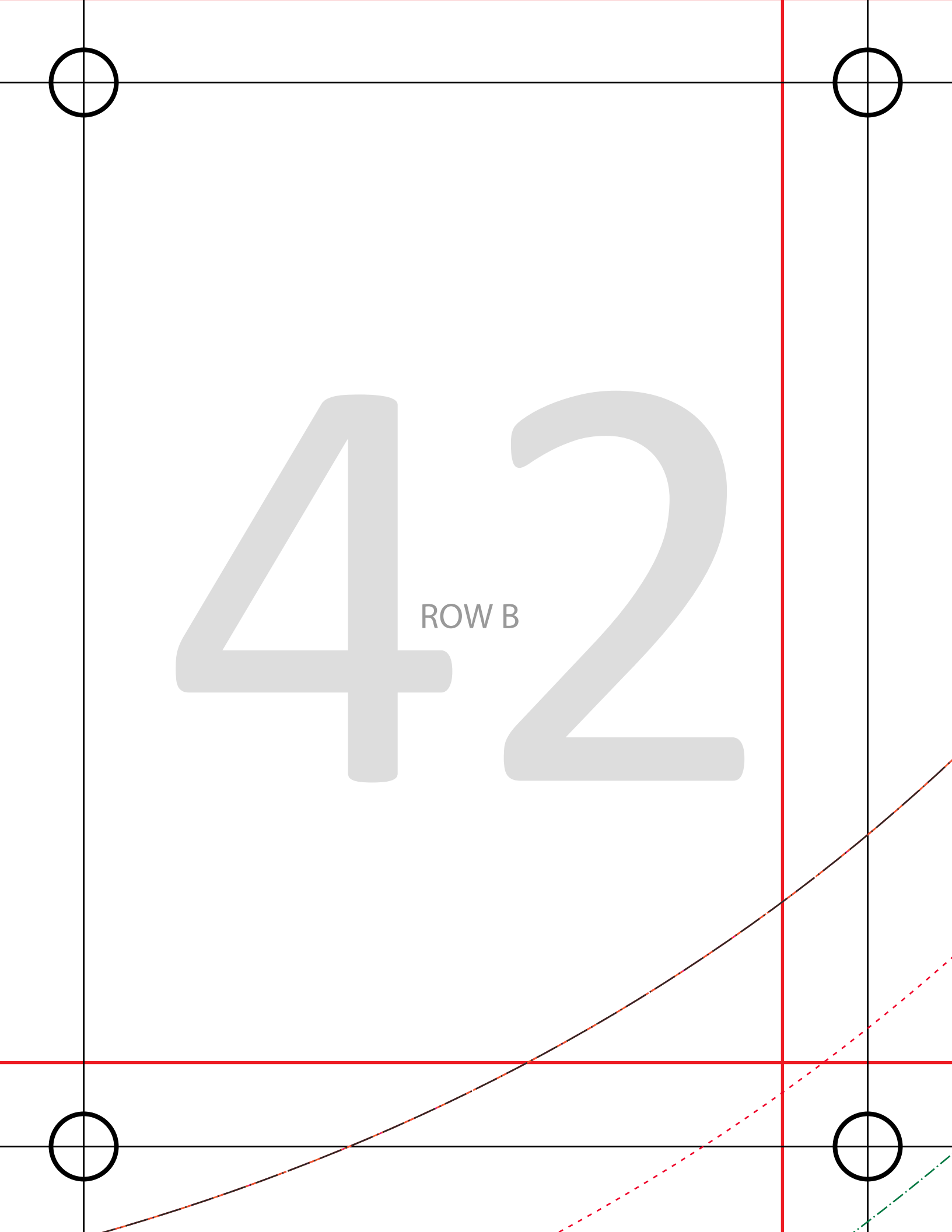
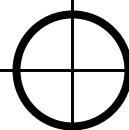
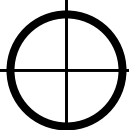
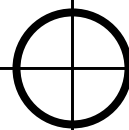
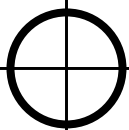
FOR DIRECTIONAL FABRIC: place the bottom of the design at the bottom of the cape.

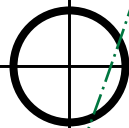
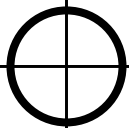


NOTE: The back of the poncho will have the design upside down, but it will look right when flipped up over the back of a car seat. If you are not using the poncho in a car seat and wish to use directional fabric, you can add seam allowance to the horizontal fold line and cut your poncho in two halves, then sew them together and proceed as normal.

42

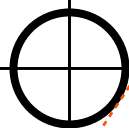
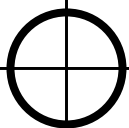
ROW B





43

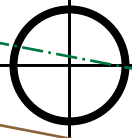
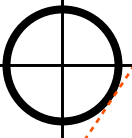
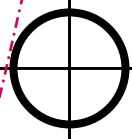
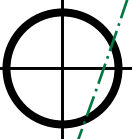
ROW B

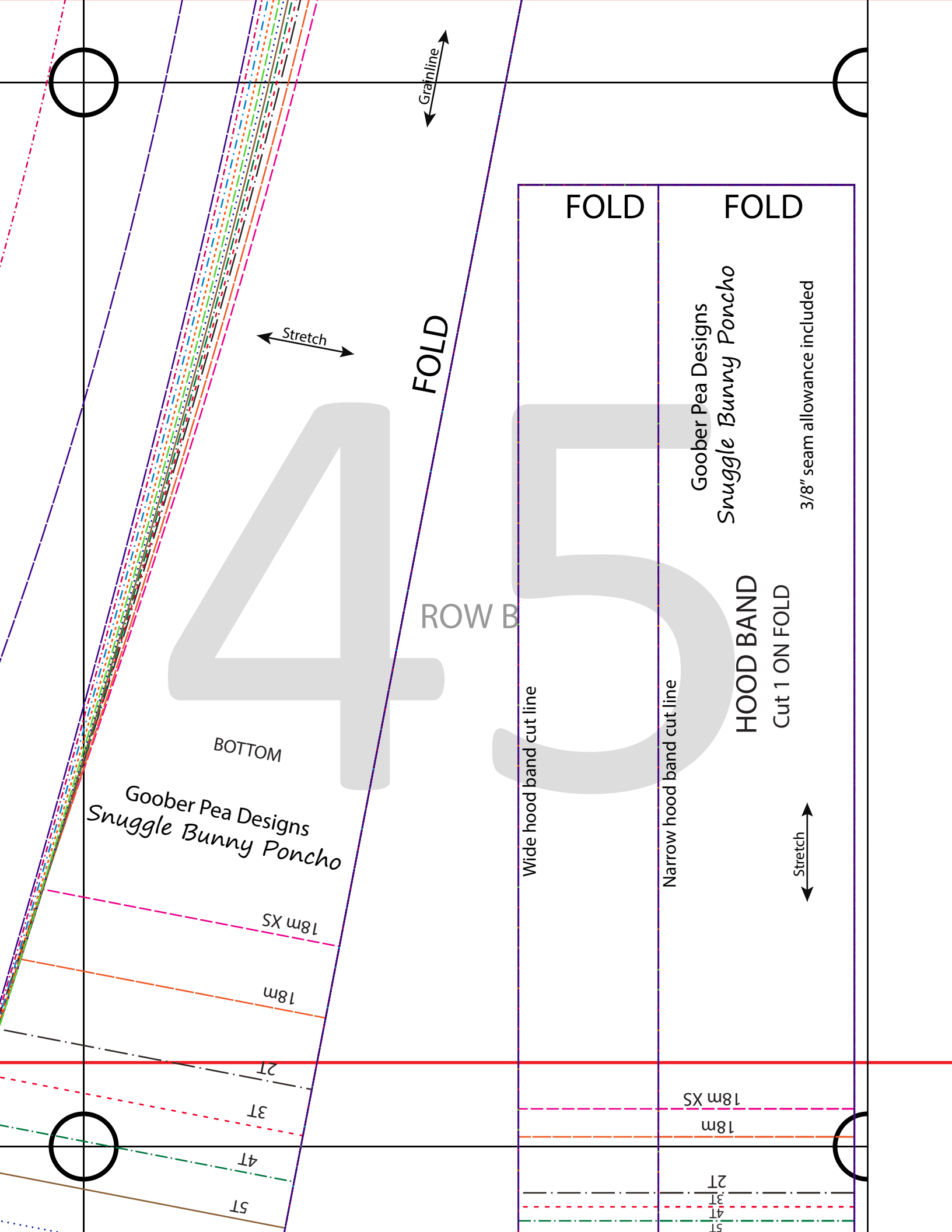


44

ROW B

Good Snuggle





Grainline

Stretch

FOLD

FOLD

FOLD

Goober Pea Designs
Snuggle Bunny Poncho

3/8" seam allowance included

ROW B

BOTTOM

Goober Pea Designs
Snuggle Bunny Poncho

Wide hood band cut line

Narrow hood band cut line

HOOD BAND

Cut 1 ON FOLD

Stretch

18m XS

18m

2T

3T

4T

5T

18m XS

18m

2T

3T

4T

5T

18m XS

18m

2T

3T

4T

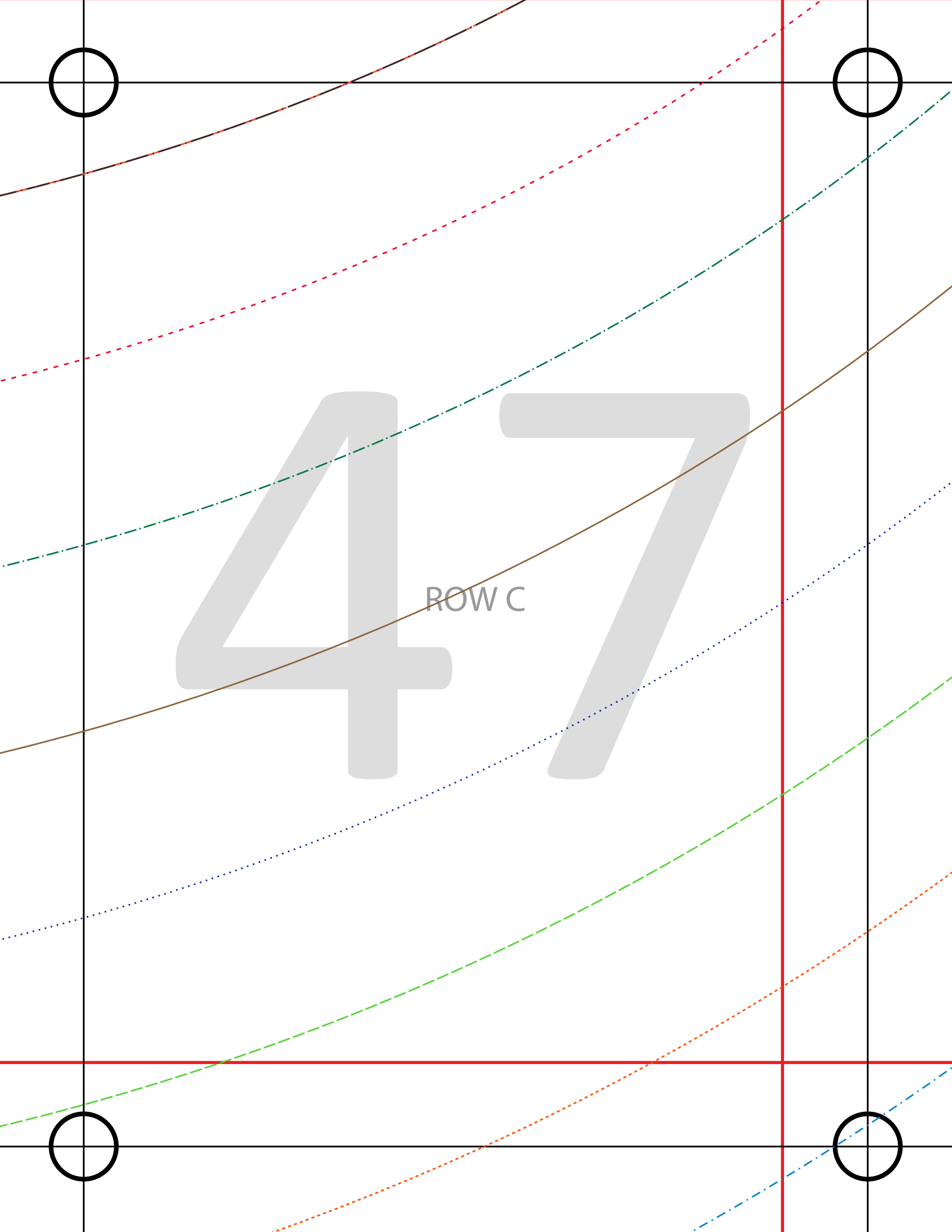
5T

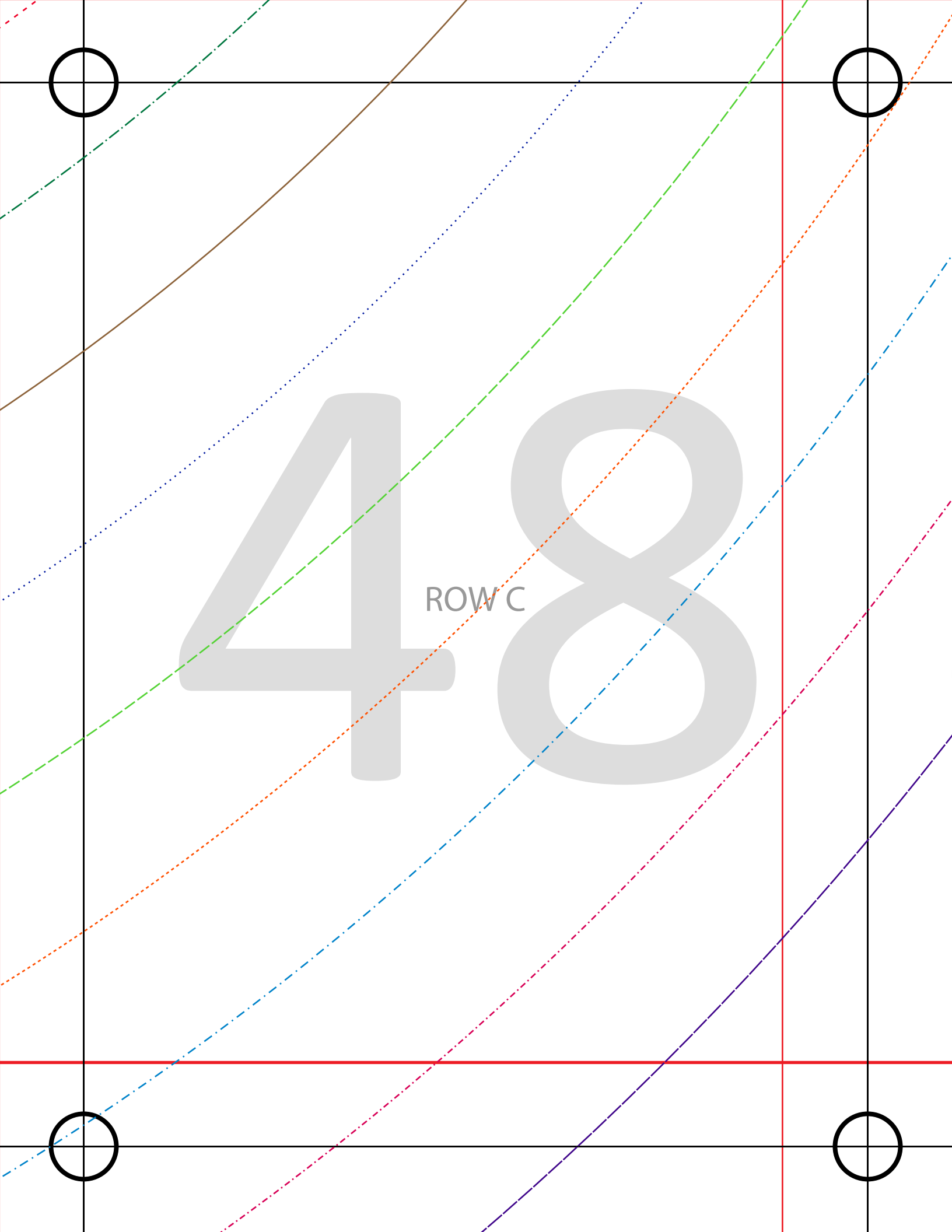
6

7

ROW C

46





48

ROW C

49

ROW C

14
12
10
8
7

6

5T

4T

3T

2T

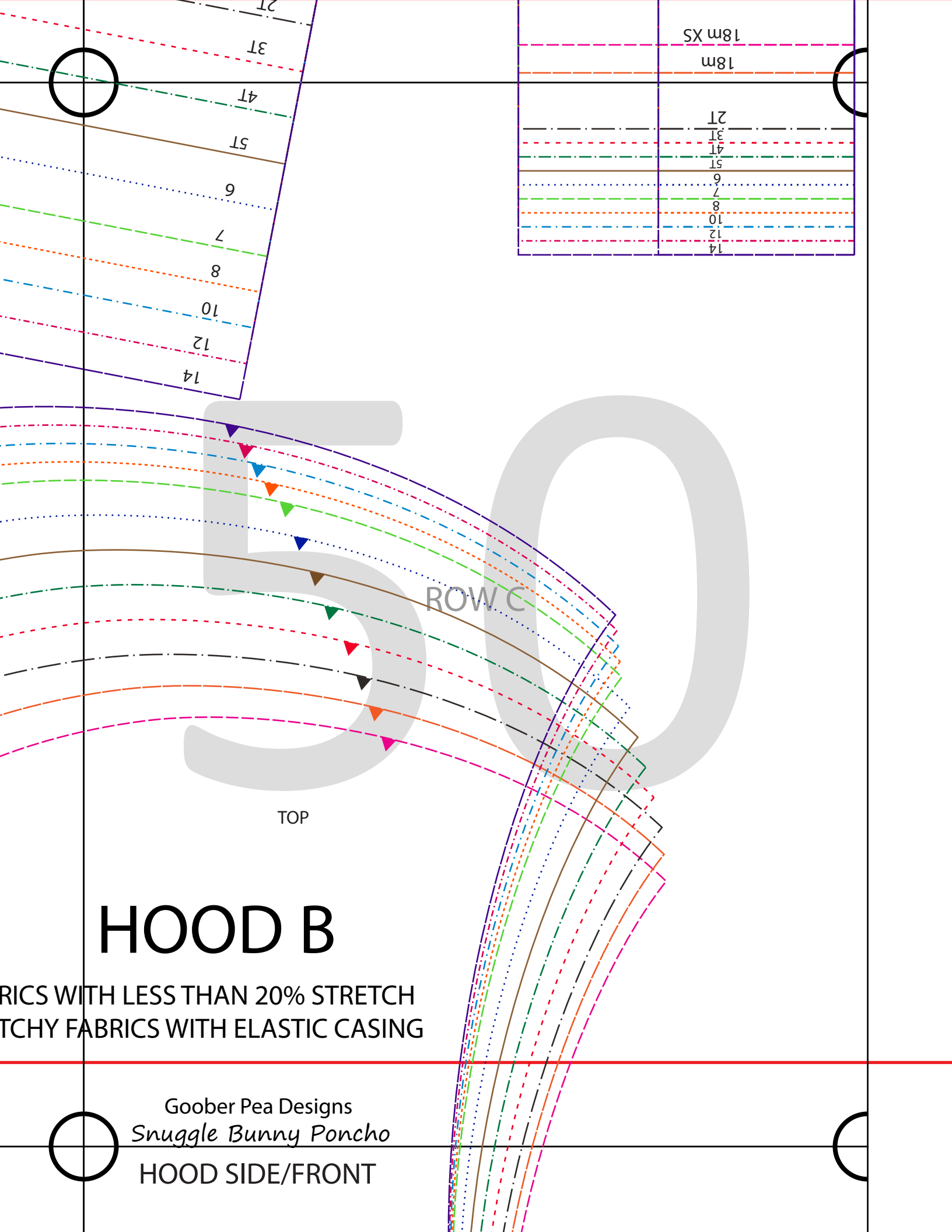
18m

18m XS

HO

FOR FABRICS WITH LESS
OR STRETCHY FABRICS

Sn
HO



18m XS	18m
21	21
31	31
41	41
51	51
6	6
7	7
8	8
10	10
12	12
14	14

TOP

ROW C

HOOD B

FABRICS WITH LESS THAN 20% STRETCH
 STRETCHY FABRICS WITH ELASTIC CASING

Goober Pea Designs
Snuggle Bunny Poncho
 HOOD SIDE/FRONT

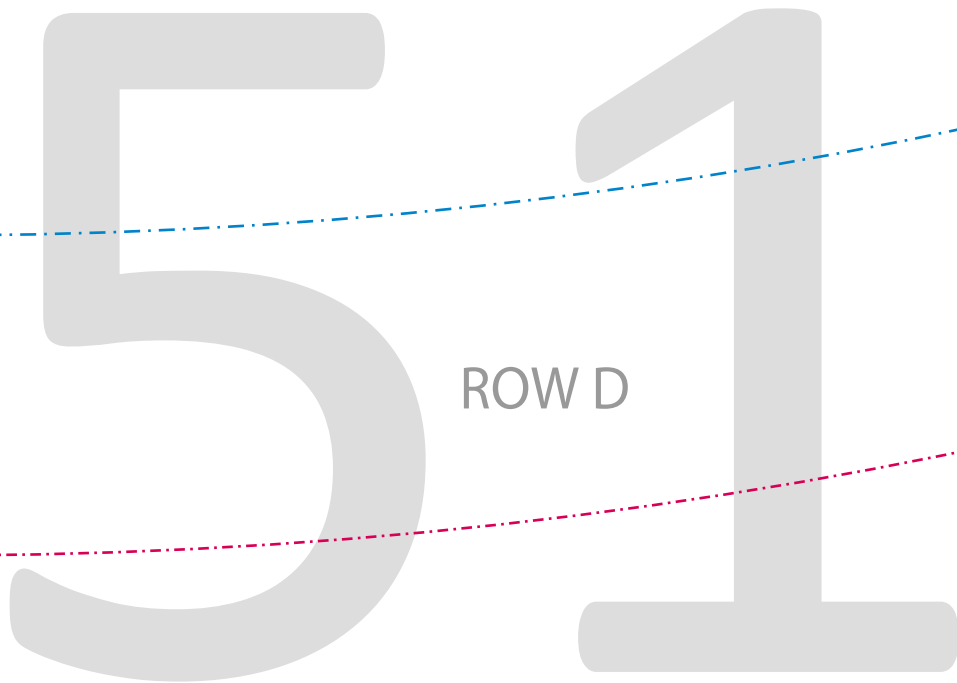
7

8

10

12

14



14 12
10 8
6 7
5T 3T 4T
2T

18m

18m XS

HOOD A

NECK HOLE TEMPLATE

Place in center of cape and trace, then cut hole

FOR FABRIC
(IDEA)

Goobar P
Swiggle Bu

HOOD SI

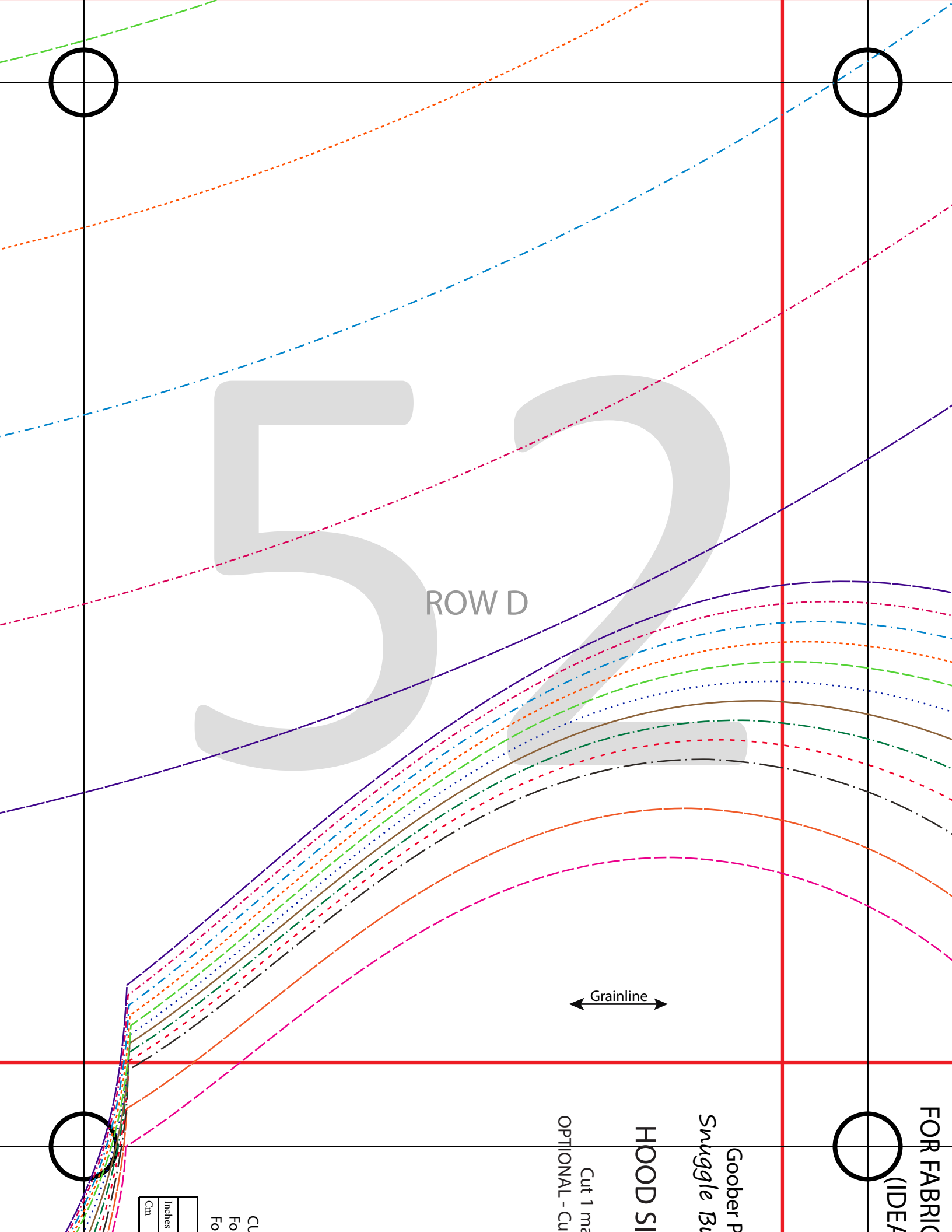
Cut 1 ma
OPTIONAL - Cu

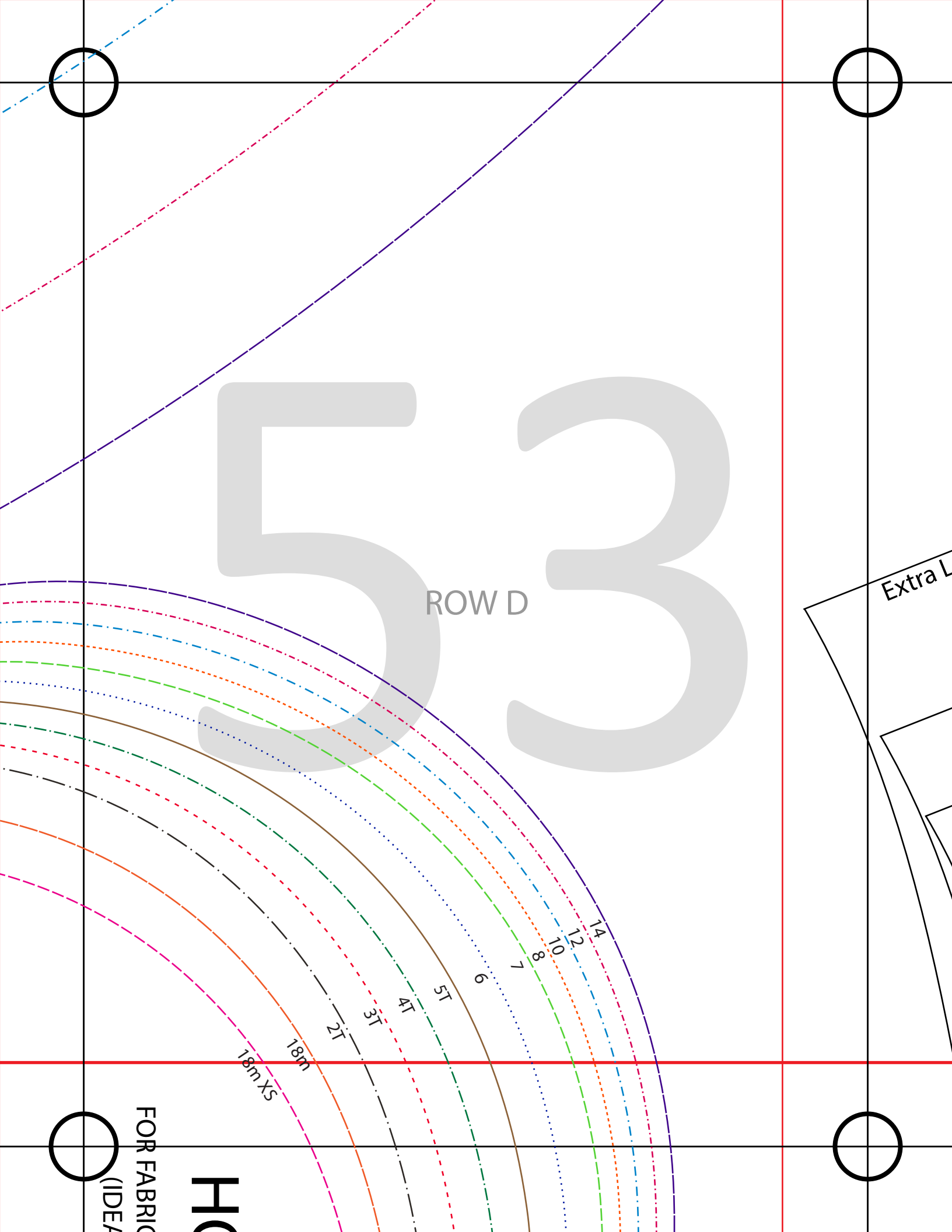
52
ROW D

Grainline

CU
Fo
Fo
Fo

Inches
Cm





ROW D

Extra L

18mXS

18m

2T

3T

4T

5T

6

7

8

10

12

14

FOR FABRIC
(IDEA)

HQ

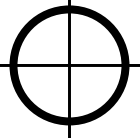
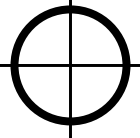
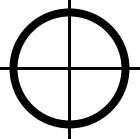
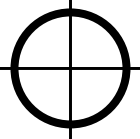
Sn
HO

OPTIC

3/

CUT MEA
For wide
For narrow

	18m X
Inches	16.5"
Cm	42cm



Grainline
↕

Grainline
↗

ROW D

Extra Large

Large

Medium

Small

Designs
cho

Goober Pea Designs
Snuggle Bunny Poncho

HOOD SIDE/FRONT

Cut 1 main ON FOLD
OPTIONAL - Cut 1 lining ON FOLD

3/8" seam allowance included

← Stretch →

CUT MEASUREMENTS FOR HOOD BAND

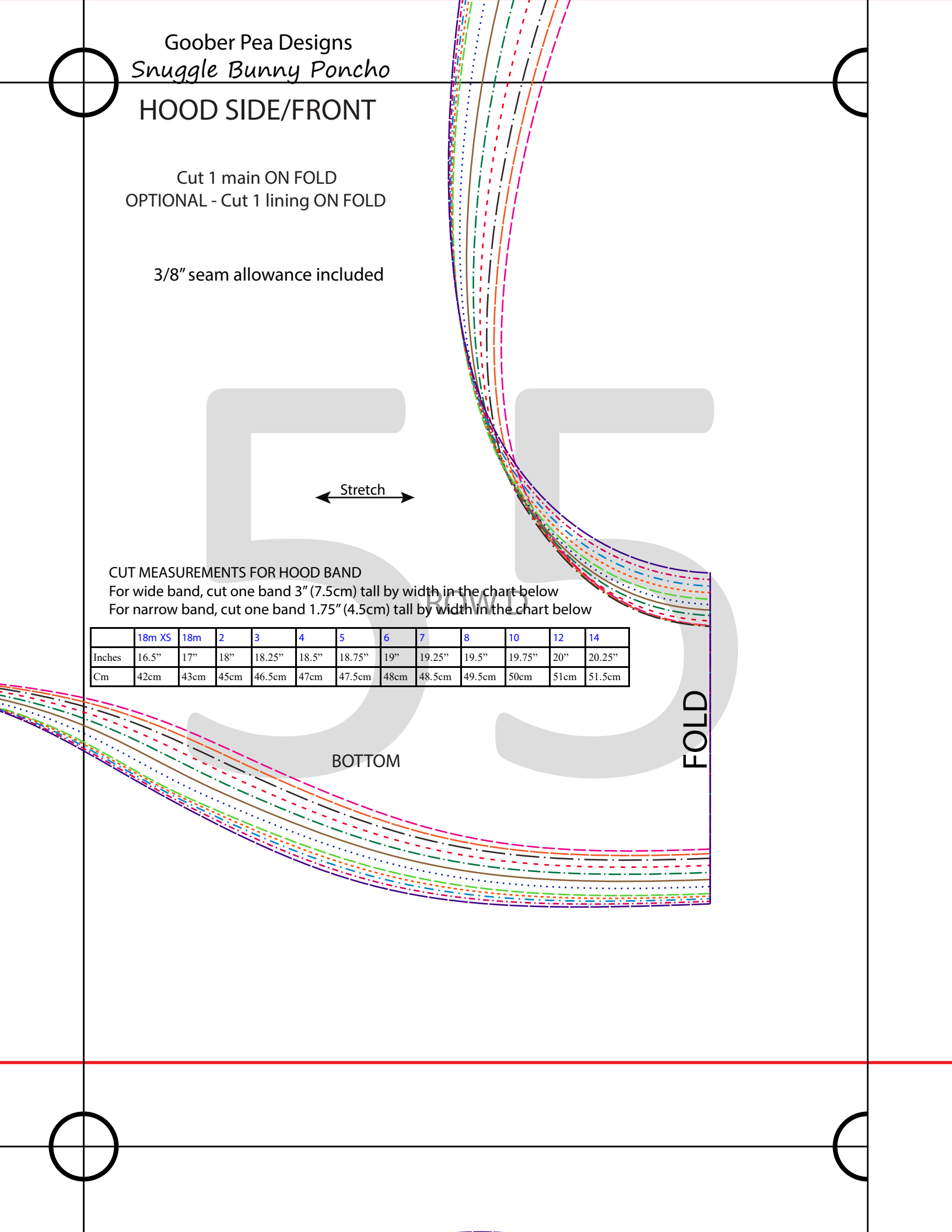
For wide band, cut one band 3" (7.5cm) tall by width in the chart below

For narrow band, cut one band 1.75" (4.5cm) tall by width in the chart below

	18m XS	18m	2	3	4	5	6	7	8	10	12	14
Inches	16.5"	17"	18"	18.25"	18.5"	18.75"	19"	19.25"	19.5"	19.75"	20"	20.25"
Cm	42cm	43cm	45cm	46.5cm	47cm	47.5cm	48cm	48.5cm	49.5cm	50cm	51cm	51.5cm

BOTTOM

FOLD



HOOD A

NECK HOLE TEMPLATE

Place in center of cape and trace, then cut hole



● -18m

● -18m XS

↑
Center placement
mark (dot)

Goober Pea Designs
Snuggle Bunny Poncho

3/8" seam allowance included

Inches	Cm
10.2	42cm
11	43cm
11.8	45cm
12.6	46.5cm
13.4	47cm
14.2	47.5cm
15	48cm
15.8	48.5cm
16.6	49.5cm
17.4	50cm
18.2	51cm
19	51.5cm

BOTTOM

FOLD

ROW E

BOTTOM

14

12

10

8

7

6

5T

4T

3T

2T

18m

18m XS

FOR FABRICS WITH MINIMUM 20% STRETCH
(IDEALLY 30-50% STRETCH)

Goober Pea Designs
Snuggly Bunny Poncho

HOOD SIDE/FRONT

Cut 1 main ON FOLD
OPTIONAL - Cut 1 lining ON FOLD

3/8" seam allowance included

Stretch

CUT MEASUREMENTS FOR HOOD BAND

For wide band, cut one band 3" (7.5cm) tall by width in the chart below
For narrow band, cut one band 1.75" (4.5cm) tall by width in the chart below

	18m	XS	18m	2	3	4	5	6	7	8	10	12	14
Inches	16.5"	17"	18"	18.25"	18.5"	18.75"	19"	19.25"	19.5"	19.75"	20"	20.25"	
Cm	42cm	43cm	45cm	46.5cm	47cm	47.5cm	48cm	48.5cm	49.5cm	50cm	51cm	51.5cm	

BOTTOM

FOLD

Stretch

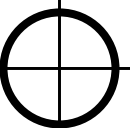
3/8" seam allowance included

Grainline

FOLD

Goober Pea Designs
Snuggly Bunny Poncho

BOTTOM



TOP



FOLD

HOOD A

FOR FABRICS WITH
MINIMUM 20% STRETCH
(IDEALLY 30-50% STRETCH)

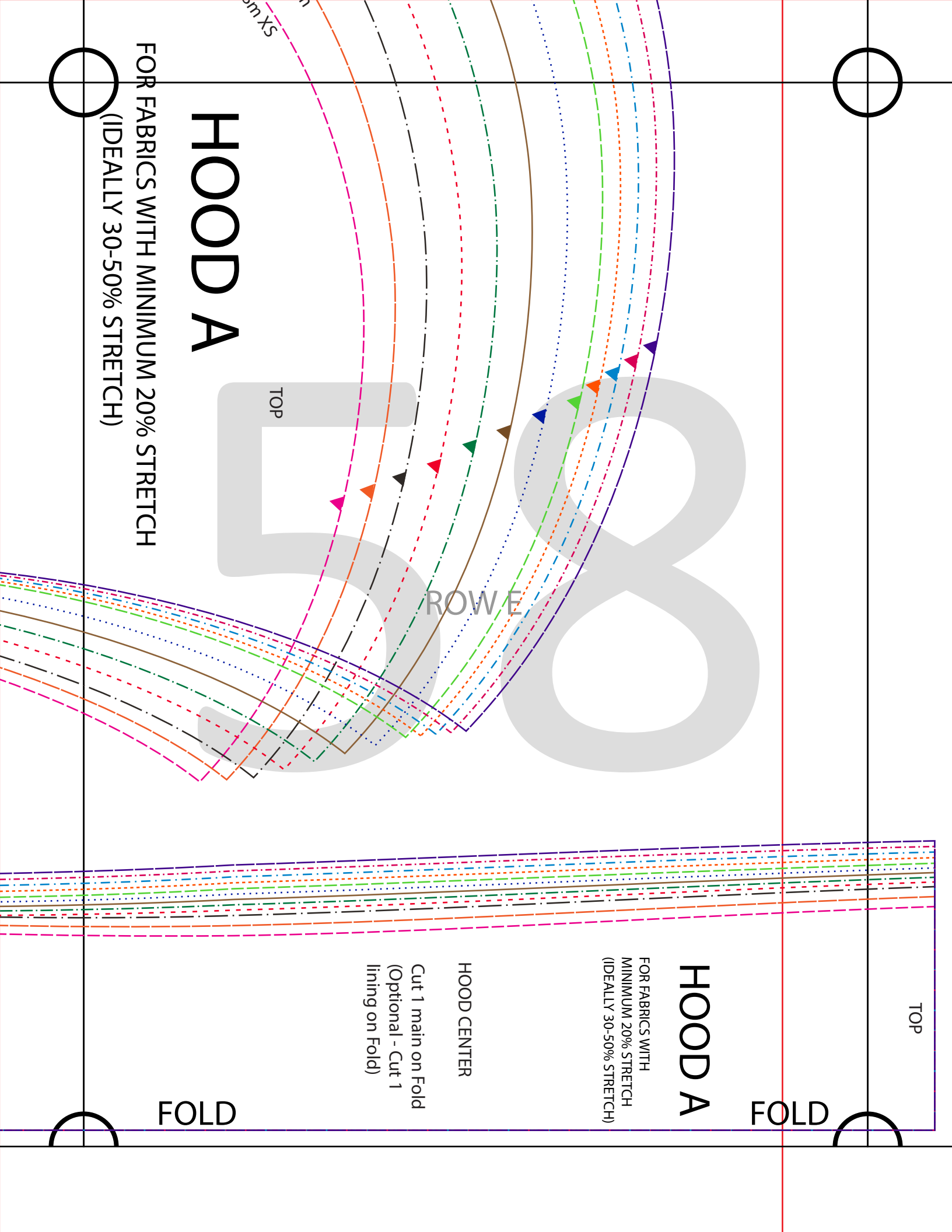
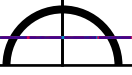
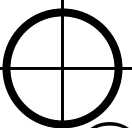
HOOD CENTER

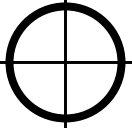
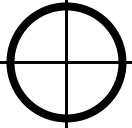
Cut 1 main on Fold
(Optional - Cut 1
lining on Fold)

FOLD

HOOD A

FOR FABRICS WITH MINIMUM 20% STRETCH
(IDEALLY 30-50% STRETCH)





Graffine

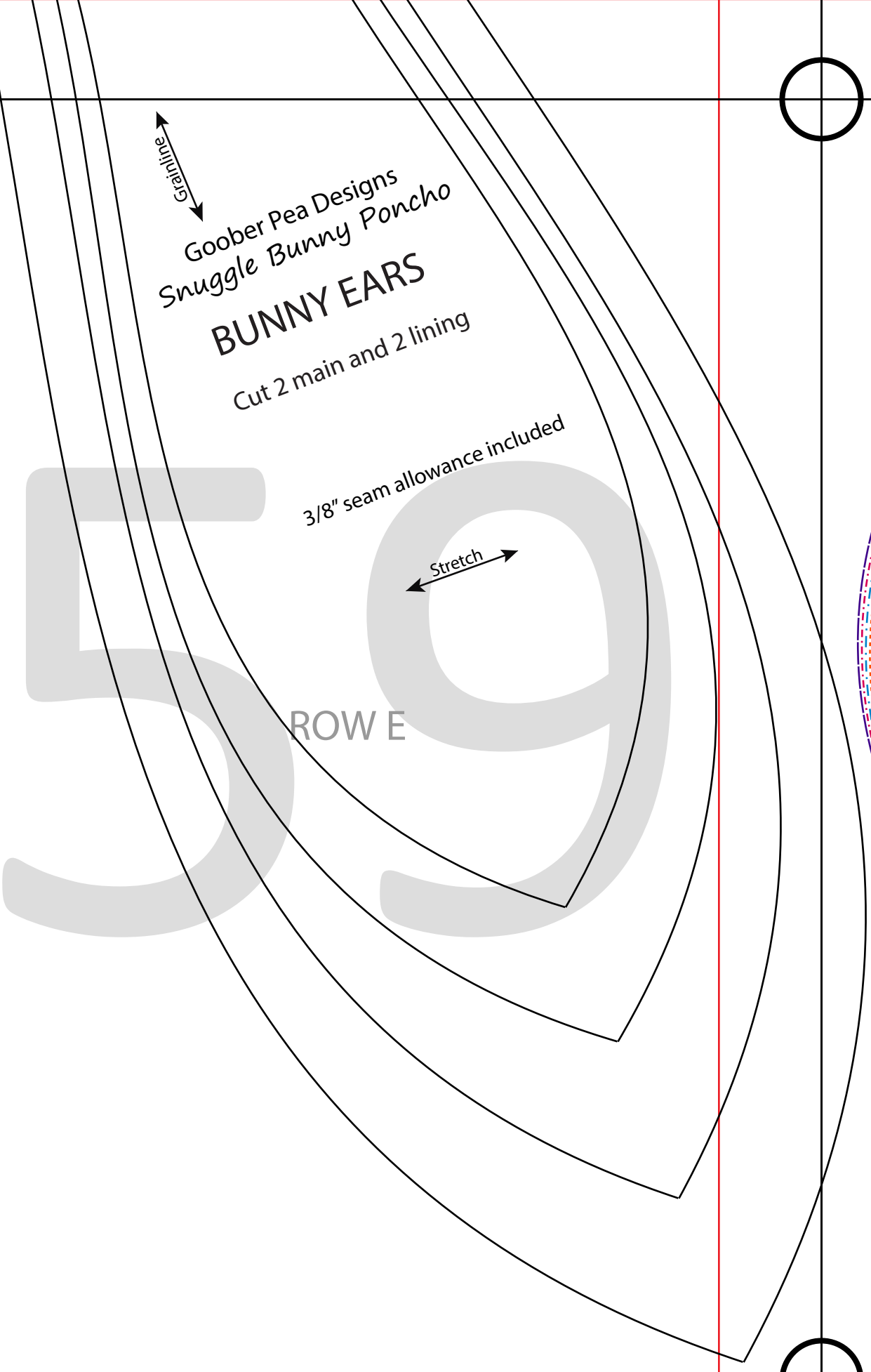
Goober Pea Designs
Snuggle Bunny Poncho

BUNNY EARS

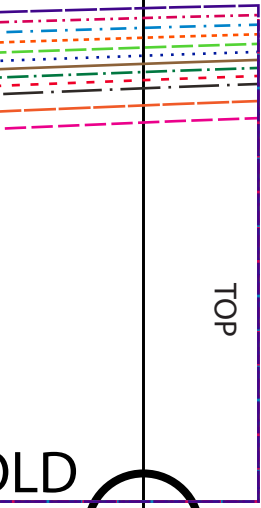
Cut 2 main and 2 lining

3/8" seam allowance included

Stretch

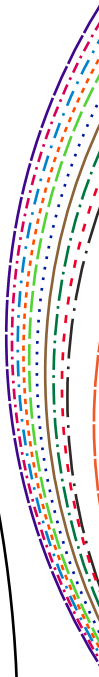
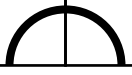
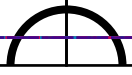


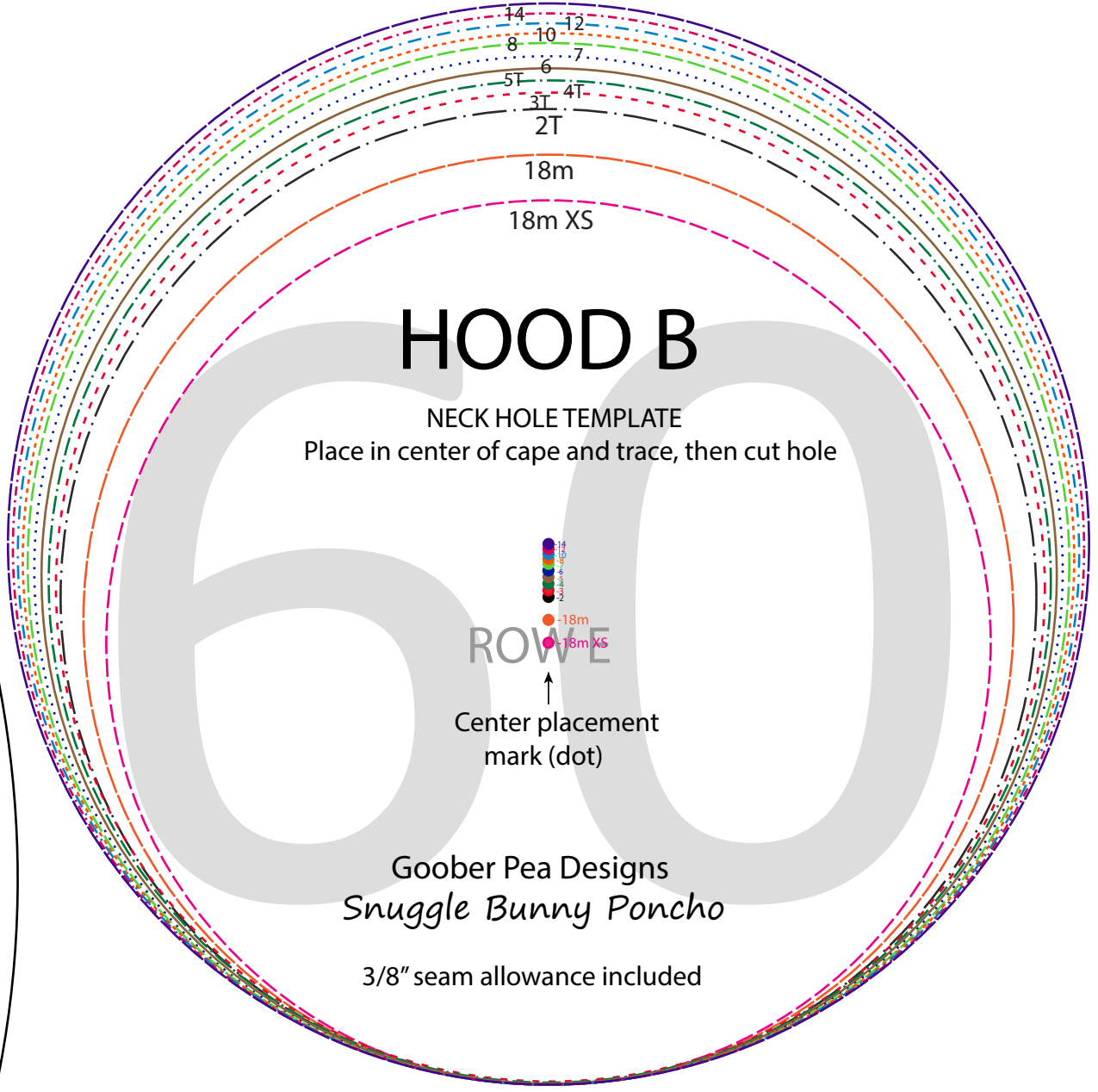
ROW E



TOP

OLD





HOOD B

NECK HOLE TEMPLATE

Place in center of cape and trace, then cut hole

18m

18m XS

14

12

10

8

7

6

5T

4T

3T

2T

18m

18m XS

ROW E

Center placement
mark (dot)

Goober Pea Designs
Snuggle Bunny Poncho

3/8" seam allowance included